



## TF Filter Plate Assay

Catalog Number FA-0010

(For Research Use Only)

### Introduction

Transcription factors (TFs) are a group of cellular proteins that play essential roles in regulating gene expression. They act as a sensor to monitor cellular change and convert the signals into gene expression. A specific TF is often regulated by multiple upstream proteins. Monitoring the activation of a TF is critical to uncovering the mechanism of signal pathways and cellular regulations. Signosis developed 48 different filter assays for monitoring the activities of TFs. Unlike gel shift assays, 96 samples can be analyzed in one experiment

### Principle of the assay

In Signosis' TF filter plate assays, a specific biotin-labeled TF DNA binding sequence is mixed with nuclear extracts to allow formation of TF-DNA complexes. A filter plate is used to retain bound DNA probe and remove free probe. The bound pre-labeled DNA probe is then eluted from the filter and collected for quantitative analysis through DNA plate hybridization. The captured DNA probe is further detected with streptavidin-HRP. Luminescence is reported as relative light units (RLUs) on a microplate luminometer.

### Materials provided with the kit

- One 96-well Filter Plate (RT)
- TF binding buffer mix (-20 °C)
- Filter binding buffer (4 °C)
- Filter wash buffer (4 °C)
- Elution buffer (RT)
- Streptavidin-HRP conjugate (4 °C)
- Plate hybridization buffer (RT)
- 5x Plate hybridization wash buffer (RT)
- Blocking buffer (RT)
- 5x Detection wash buffer (RT)
- Substrate A (4 °C)
- Substrate B (4 °C)
- Substrate dilution buffer (RT)

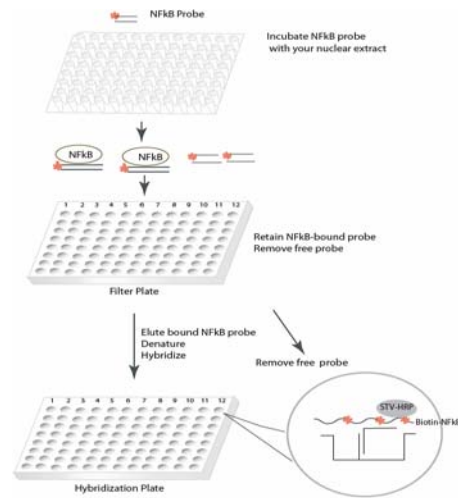


Diagram of NFkB Filter Plate Assay

### Material required but not provided

- Nuclear Extraction Kit from Signosis (SK-0001)
- 96-well Hybridization Plate and TF probe (PP-XXXX from Signosis)
- Selected TF probe (-20 °C)
- Wash Collection Plate (Any 96-well ELISA plate or equivalent 96-well plastic plate)
- 96-well PCR plate
- PCR machine
- Microplate centrifuge working at 4 °C
- Hybridization incubator
- Shaker
- Plate reader for luminescent detection
- ddH<sub>2</sub>O (RNAase free)

### Reagent preparation before starting experiment

- Warm up Plate Hybridization Buffer and Hybridization Wash buffer at 45 °C before use.
- Dilute 30ml of 5x Plate Hybridization wash buffer with 120 ml of dH<sub>2</sub>O before use.
- Dilute 40ml of 5x Detection wash buffer with 160 ml of dH<sub>2</sub>O before use.
- Dilute 1000 times of streptavidin-HRP with blocking buffer before use.

## Assay Procedure

### TF DNA Complex Formation

1. Mix the following components for each reaction in a tube or one well of a PCR plate  
10ul TF binding buffer mix  
2ul TF probe  
Xul nuclear extract ((2µg-10µg)  
Xul ddH<sub>2</sub>O  
20ul
2. Incubation at 16°C for 30 minutes in a PCR machine

### Separation of TF DNA Complex from Free Probes

1. Based on the number of experiment, allocate the number of wells on Filter Plate, and remove the top foil sealing film with a blade. Keep the unused well sealed.
2. Place Wash Collection Plate on the bottom of Filter Plate during the following steps to assemble Filter Plate/Wash Collection Plate.
3. Pre-wet the Filter Plate
  - i. Add 250ul/well cold Filter binding buffer to each experimental well of Filter Plate.
  - ii. Centrifuge Filter Plate/Wash Collection Plate at 600g for 2 minutes, and discard the flow-through from Wash Collection Plate.
4. Add 20ul cold Filter binding buffer to each TF-DNA complex reaction tube or well, and transfer 35ul of the mixture to the center of the filter in the corresponding well of Filter Plate.
5. Incubate on ice for 30 minutes.  
**Don't incubate longer than 30 minutes, which results in high background.**
6. Centrifuge Filter Plate/Wash Collection Plate at 600g for 2 minutes and discard the flow-through from the Wash Collection Plate.
7. Add 250ul cold Filter wash buffer to each experimental well of Filter Plate and incubate for 2-3 minutes on ice.
8. Centrifuge Filter Plate/Wash Collection Plate at 600g for 2 minutes, and discard the flow-through from Wash Collection Plate.
9. Repeat the step 7-8 for 3 times for total 4 washes.

### Elution of Bound Probe

1. Add 60ul of Elution buffer to the center of each experimental well in Filter Plate
2. Place a 96-well PCR plate on the top of Wash Collection Plate or a 96-well PCR plate rack.
3. Place Filter Plate on the top of a 96-well PCR plate. In order to collect the elution completely and facilitate the centrifugate, ensure each well on the top plate matches the bottom ones, and fix the assemblies with tape on sides of the plates.
4. Incubate for 5 minutes at room temperature.
5. Centrifuge assemblies at 600g for 2 minutes. The 60 ul of sample should be in each well of the 96 well PCR plate.
6. Denature the samples in the Elution Plate at 95 °C for 3 minutes in a PCR machine, and transfer on ice immediately. The samples are ready for hybridization or store -20 °C for the future use.

### Hybridization of Eluted Probe with Hybridization Plate

1. Based on the number of experiment, allocate the number of the wells of Hybridization Plate and remove the top foil sealing film with a blade. Keep the unused well sealed.
2. Add 60ul Hybridization buffer to each experimental well of TF Hybridization Plate, transfer 30ul of denatured sample to the corresponding well, and mix gently.
3. Incubate at 45 °C for 2 hours.

### Detection of Bound Probe

1. Invert the Hybridization Plate over an appropriate container and expel the contents forcibly, and wash the plate 3 times by adding 200µl of pre-warmed 1x Plate hybridization wash buffer.
2. Complete removal of liquid at each wash by firmly tapping the plate against clean paper towels.
3. Add 200µl of Block buffer incubate for 15 minutes at room temperature with gentle shaking.
4. Invert the plate over an appropriate container to remove blocking buffer.
5. Add 100 µl of diluted streptavidin-HRP conjugate to each well and incubate for 45 min at room temperature with gentle shaking.
6. Wash the plate with 200ul 1X Detection wash buffer for 5 min at room temperature with gently shaking. Complete removal of liquid at each wash by firmly tapping the plate against clean paper towels.
7. Repeat Step 6 for additional 2 times.
8. Freshly prepare the substrate solution:  
For the whole plate:  
1ml Substrate A  
1ml Substrate B  
8ml Substrate dilution buffer
9. Add 95µl substrate solution to each well and incubate for 1 min.
10. Determine the chemiluminescence of each well with a microplate reader within 5 minutes.

### Data Example

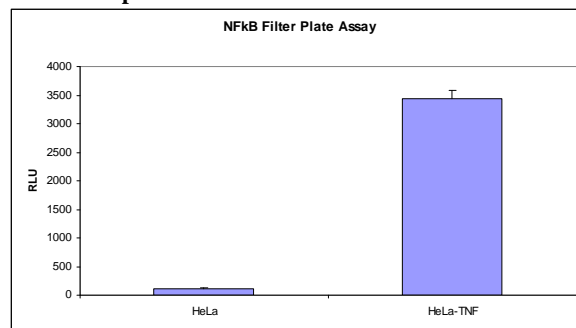


Figure. NFkB filter plate assay. HeLa cells were treated with or without TNF. Nuclear extracts were prepared and subjected to tNFkB filter assay. The bound NFkB probe was measured with Luminescence.