

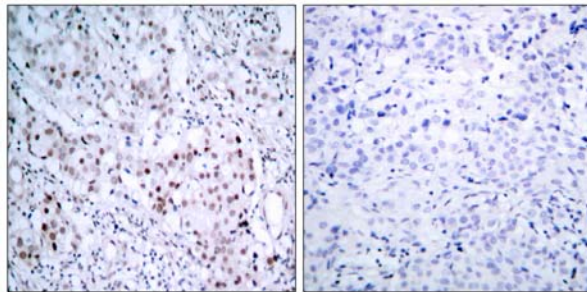


## c-Jun(Phospho-Ser63) Antibody

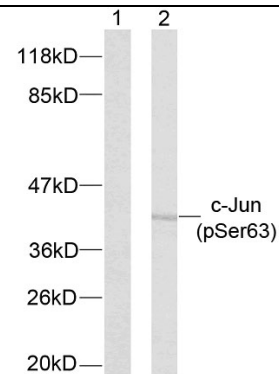
Catalog Number 11001

(For Research Use Only)

- Catalog Number:** 11001-1, 11001-2, 11001  
**Amount:** 50µg/50µl, 100µg/100µl, 200µg/200µl  
**Form of Antibody:** Rabbit IgG in phosphate buffered saline (without Mg<sup>2+</sup> and Ca<sup>2+</sup>), pH 7.4, 150mM NaCl, 0.02% sodium azide and 50% glycerol.  
**Storage/Stability:** Store at -20°C/1 year  
**Immunogen:** The antiserum was produced against synthesized phosphopeptide derived from human c-Jun around the phosphorylation site of Serine 63.  
**Purification:** The antibody was affinity-purified from rabbit antiserum by affinity-chromatography using epitope-specific phosphopeptide. The antibody against non-phosphopeptide was removed by chromatography using non-phosphopeptide corresponding to the phosphorylation site.  
**Specificity/Sensitivity:** c-Jun(Phospho-Ser63) Antibody detects endogenous levels of c-Jun only when phosphorylated at Serine 63.  
**Reactivity:** Human, Mouse  
**Applications:** WB: 1:500~1:1000      IHC: 1:50~1:100  
ELISA: 1:20000  
**Swiss-Prot No. :** P05412  
**References:** Wei W, et al. (2005). Cancer Cell. 8(1): 25-33.  
Sevilla A, et al. (2004). Oncogene.23(55): 8950-8958.  
Li L, et al. (2004). J Biol Chem.279(6): 4058-4065.  
Hurd C, et al. (2002). Oncogene.21(14): 2154-2160.



Immunohistochemical analysis of paraffin-embedded breast carcinoma, using c-Jun (Phospho-Ser63) Antibody (#11001). Left: Untreated; Right: Treated with synthesized phosphopeptide.



Western blot analysis of extracts using c-Jun (Phospho-Ser63) Antibody (#11001). Line1: The extracts from NIH/3T3 cells untreated; Line2: The extracts from NIH/3T3 cells treated with UV.