

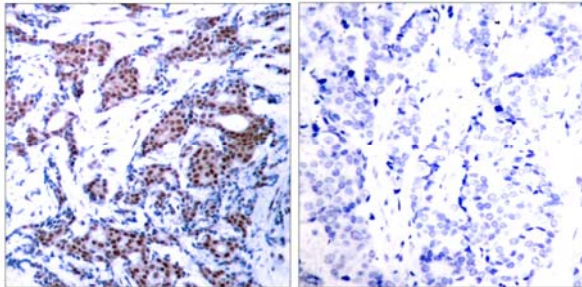


c-Jun (Phospho-Ser73) Antibody

Catalog Number 11003

(For Research Use Only)

- Catalog Number:** 11003-1, 11003-2, 11003
Amount: 50µg/50µl, 100µg/100µl, 200µg/200µl
Form of Antibody: Rabbit IgG in phosphate buffered saline (without Mg²⁺ and Ca²⁺), pH 7.4, 150mM NaCl, 0.02% sodium azide and 50% glycerol.
Storage/Stability: Store at -20°C/1 year
Immunogen: The antiserum was produced against synthesized phosphopeptide derived from human c-Jun around the phosphorylation site of serine 73 (L-A-S^P-P-E).
Purification: The antibody was affinity-purified from rabbit antiserum by affinity-chromatography using epitope-specific phosphopeptide. The antibody against non-phosphopeptide was removed by chromatography using non-phosphopeptide corresponding to the phosphorylation site.
Specificity/Sensitivity: c-Jun (phospho-Ser73) antibody detects endogenous levels of c-Jun only when phosphorylated at serine 73.
Reactivity: Human, Mouse, Rat
Applications: WB: 1:500~1:1000 IHC: 1:50~1:100
ELISA: 1:10000
Swiss-Prot No. : P05412
References: Sevilla A, et al. (2004) *Oncogene*.23 (55): 8950-8958.
Beausoleil S A, et al. (2004) *Proc Natl Acad Sci U S A*. 101(33): 12130-12135.
Binetruy B, et al. (1991) *Nature*. 351:122-127.
Smeal T, et al. (1991) *Nature*. 354: 494-496.
Derijard B, et al. (1994) *Cell*. 76:1025-1037.

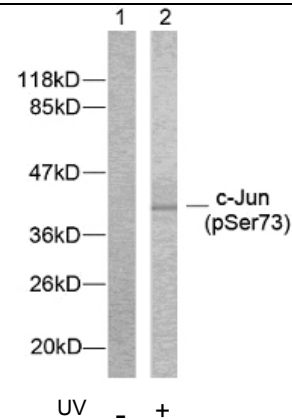


P-Peptide

-

+

Immunohistochemical analysis of paraffin-embedded human breast carcinoma tissue using c-Jun (phospho-Ser73) antibody (#11003).



Western blot analysis of extracts from HeLa cells using c-Jun (phospho-Ser73) antibody (#11003).