

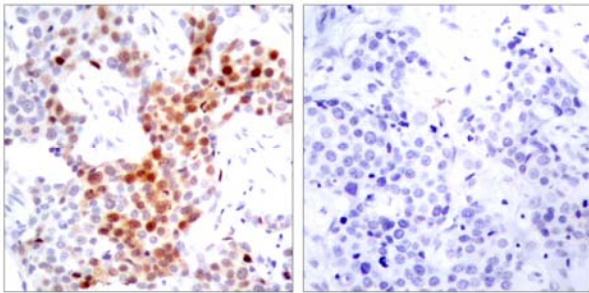


ATF-2(Phospho-Thr69 or 51) Antibody

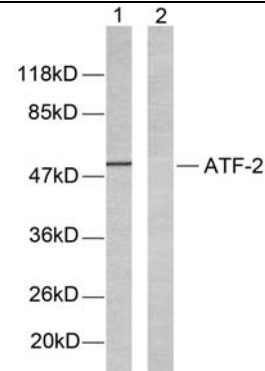
Catalog Number 11030

(For Research Use Only)

- Catalog Number:** 11030-1, 11030-2, 11030
Amount: 50µg/50µl, 100µg/100µl, 200µg/200µl
Form of Antibody: Rabbit IgG in phosphate buffered saline (without Mg²⁺ and Ca²⁺), pH 7.4, 150mM NaCl, 0.02% sodium azide and 50% glycerol.
Storage/Stability: Store at -20°C/1 year
Immunogen: The antiserum was produced against synthesized phosphopeptide derived from human ATF-2 around the phosphorylation site of Threonine 69 or 51.
Purification: The antibody was affinity-purified from rabbit antiserum by affinity-chromatography using epitope-specific phosphopeptide. The antibody against non-phosphopeptide was removed by chromatography using non-phosphopeptide corresponding to the phosphorylation site.
Specificity/Sensitivity: ATF-2(Phospho-Thr69 or 51) Antibody detects endogenous levels of ATF-2 only when phosphorylated at Threonine 69 or 51.
Reactivity: Human, Mouse, Rat
Applications: WB: 1:500~1:1000 IHC: 1:50~1:100
ELISA: 1:20000 IP: Various Dilution
Swiss-Prot No. : P15336
References: Sevilla A, et al. (2004) J Biol Chem. 279(26):27458-27465.
Alsayed Y, et al. (2001) J Biol Chem. 276(6): 4012-4019.
Abdel-Hafiz H A, et al. (1992) Mol Endocrinol. 6: 2079-2089.
Gupta S, et al. (1995) Science. 267: 389-393.



Immunohistochemical analysis of paraffin-embedded breast carcinoma. Left: Using ATF-2 (Phospho-Thr69 or 51) Antibody (#11030); Right: The same antibody preincubated with synthesized phosphor-peptide.



Western blot analysis of extracts from LOVO cells. Line1: Using ATF-2 (Ab-69 or 51) Antibody (#21030); Line2: Using the same antibody preincubated with synthesized peptide.