

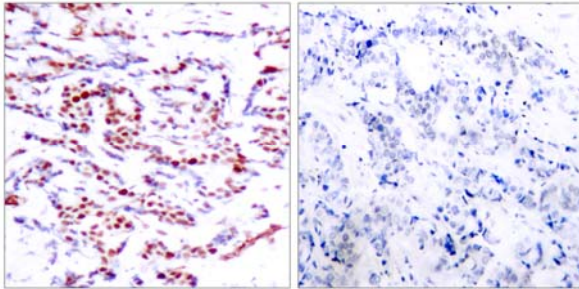


ATF-2(Phospho-Thr71 or 53) Antibody

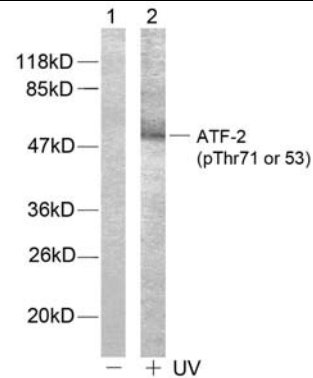
Catalog Number 11031

(For Research Use Only)

- Catalog Number:** 11031-1, 11031-2, 11031
Amount: 50µg/50µl, 100µg/100µl, 200µg/200µl
Form of Antibody: Rabbit IgG in phosphate buffered saline (without Mg²⁺ and Ca²⁺), pH 7.4, 150mM NaCl, 0.02% sodium azide and 50% glycerol.
Storage/Stability: Store at -20°C/1 year
Immunogen: The antiserum was produced against synthesized phosphopeptide derived from human ATF-2 around the phosphorylation site of Threonine 71 or 53.
Purification: The antibody was affinity-purified from rabbit antiserum by affinity-chromatography using epitope-specific phosphopeptide. The antibody against non-phosphopeptide was removed by chromatography using non-phosphopeptide corresponding to the phosphorylation site.
Specificity/Sensitivity: ATF-2(Phospho-Thr71 or 53) Antibody detects endogenous levels of ATF-2 only when phosphorylated at Threonine 71 or 53.
Reactivity: Human, Mouse, Rat
Applications: WB: 1:500~1:1000 IHC: 1:50~1:100
ELISA: 1:20000 IP: Various Dilution
Swiss-Prot No. : P15336
References: Sevilla A, et al. (2004) J Biol Chem. 279(26):27458-27465.
Waetzig G H, et al. (2002) J Immunol. 168(10): 5342-5351.
Abdel-Hafiz H A, et al. (1992) Mol Endocrinol. 6: 2079-2089.
Gupta S, et al. (1995) Science. 267: 389-393.
Van Dam H, et al. (1995) EMBO J. 14(8): 1798-1811.



Immunohistochemical analysis of paraffin-embedded breast carcinoma. Left: Using ATF-2 (Phospho-Thr71 or 53) Antibody (#11031); Right: The same antibody preincubated with synthesized phosphopeptide.



Western blot analysis of extracts, using ATF-2 (Phospho-Thr71 or 53) Antibody (#11031). Line1: The extracts from HeLa cells untreated; Line2: The extracts from HeLa cells treated with UV.