

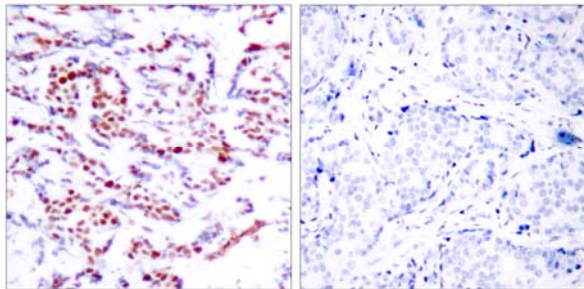


ATF-2 (Phospho-Ser112 or 94) Antibody

Catalog Number 11033

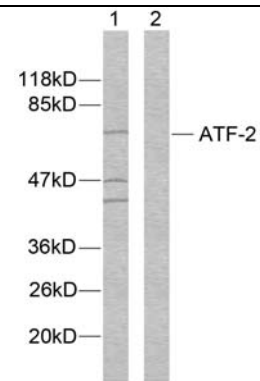
(For Research Use Only)

- Catalog Number:** 11033-1, 11033-2, 11033
Amount: 50µg/50µl, 100µg/100µl, 200µg/200µl
Form of Antibody: Rabbit IgG in phosphate buffered saline (without Mg²⁺ and Ca²⁺), pH 7.4, 150mM NaCl, 0.02% sodium azide and 50% glycerol.
Storage/Stability: Store at -20°C/1 year
Immunogen: The antiserum was produced against synthesized phosphopeptide derived from human ATF-2 around the phosphorylation site of Serine 112 or 94 (D-L-S^P-P-L).
Purification: The antibody was affinity-purified from rabbit antiserum by affinity-chromatography using epitope-specific phosphopeptide. The antibody against non-phosphopeptide was removed by chromatography using non-phosphopeptide corresponding to the phosphorylation site.
Specificity/Sensitivity: ATF-2 (phospho-Ser112 or 94) antibody detects endogenous levels of ATF-2 only when phosphorylated at serine 112 or 94.
Reactivity: Human, Mouse, Rat
Applications: WB: 1:500~1:1000 IHC: 1:50~1:100
ELISA: 1:20000 IP: Various Dilution
Swiss-Prot No. : P15336
References: Beausoleil S A, et al. (2004) Proc Natl Acad Sci U S A. 101(33): 12130-12135.
Abdel-Hafiz H A, et al. (1992) Mol Endocrinol. 6: 2079-2089.
Gupta S, et al. (1995) Science. 267: 389-393.
van Dam H, et al. (1995) EMBO J. 14(8): 1798-1811.
Livingstone C, et al. (1995) EMBO J. 14: 1785-1797.



P-Peptide - +

Immunohistochemical analysis of paraffin-embedded human breast carcinoma tissue using ATF-2 (phospho-Ser112 or 94) antibody (#11033).



P-Peptide - +

Western blot analysis of extracts from MDA-MB-435 cells using ATF-2 (Ab-112 or 94) antibody (#21033).