

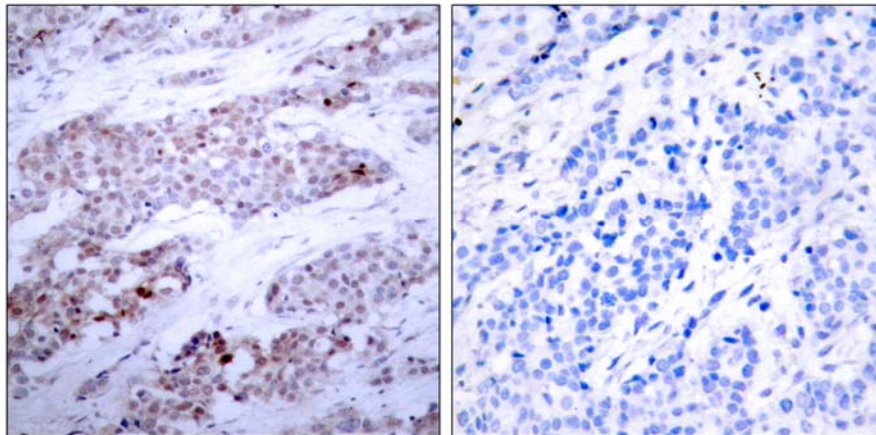


ATF4(Phospho-Ser245) Antibody

Catalog Number 11053

(For Research Use Only)

- Catalog Number:** 11053-1, 11053-2, 11053
Amount: 50µg/50µl, 100µg/100µl, 200µg/200µl
Form of Antibody: Rabbit IgG in phosphate buffered saline (without Mg²⁺ and Ca²⁺), pH 7.4, 150mM NaCl, 0.02% sodium azide and 50% glycerol.
Storage/Stability: Store at -20°C/1 year
Immunogen: The antiserum was produced against synthesized phosphopeptide derived from human ATF4 around the phosphorylation site of Serine 245.
Purification: The antibody was affinity-purified from rabbit antiserum by affinity-chromatography using epitope-specific phosphopeptide. The antibody against non-phosphopeptide was removed by chromatography using non-phosphopeptide corresponding to the phosphorylation site.
Specificity/Sensitivity: ATF4(Phospho-Ser245) Antibody detects endogenous levels of ATF4 only when phosphorylated at Serine 245.
Reactivity: Human
Applications: IHC: 1:50~1:100 ELISA: 1:10000
Swiss-Prot No. : P18848
References: Yang X, et al. (2004). Cell.117(3): 387-398.



Immunohistochemical analysis of paraffin-embedded breast carcinoma, using ATF4(Phospho-Ser245) Antibody (#11053). Left: Untreated; Right: Treated with synthesized phosphopeptide.