

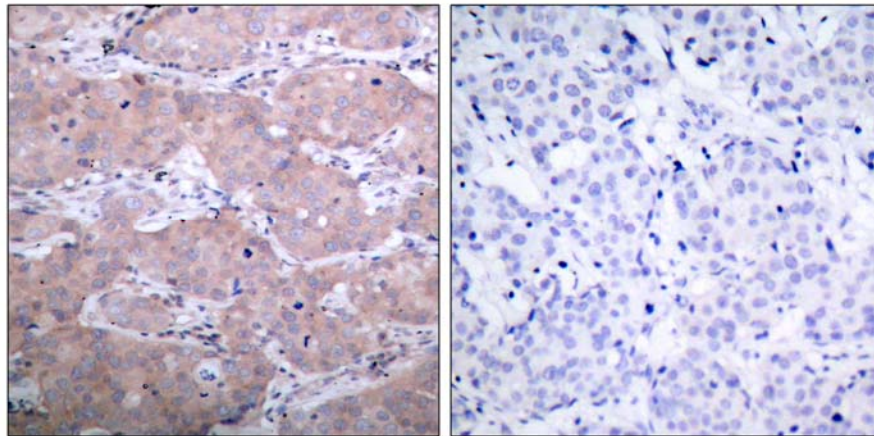


Akt(Phospho-Ser473) Antibody

Catalog Number 11054

(For Research Use Only)

- Catalog Number:** 11054-1, 11054-2, 11054
Amount: 50µg/50µl, 100µg/100µl, 200µg/200µl
Form of Antibody: Rabbit IgG in phosphate buffered saline (without Mg²⁺ and Ca²⁺), pH 7.4, 150mM NaCl, 0.02% sodium azide and 50% glycerol.
Storage/Stability: Store at -20°C/1 year
Immunogen: The antiserum was produced against synthesized phosphopeptide derived from human Akt around the phosphorylation site of Serine 473.
Purification: The antibody was affinity-purified from rabbit antiserum by affinity-chromatography using epitope-specific phosphopeptide. The antibody against non-phosphopeptide was removed by chromatography using non-phosphopeptide corresponding to the phosphorylation site.
Specificity/Sensitivity: Akt(Phospho-Ser473) Antibody detects endogenous levels of Akt only when phosphorylated at Serine 473.
Reactivity: Human, Mouse, Rat
Applications: IHC: 1:50~1:100 ELISA: 1:2000
Swiss-Prot No. : P31749
References: Baudhuin LM, et al. (2004) FASEB J Feb; 18(2): 341-3.
Min YH, et al. (2004) Cancer Res; 64(15): 5225-31.
Feng J, et al. (2004) J Biol Chem; 279(34): 35510-7.
Ayala G, et al. (2004) Clin Cancer Res; 10(19): 6572-8.
Lungu AO, et al. (2004) J Biol Chem; 279(47): 48794-800.



Immunohistochemical analysis of paraffin-embedded breast carcinoma, using Akt(Phospho-Ser473) Antibody (#11054). Left: Untreated; Right: Treated with synthesized phosphopeptide.