

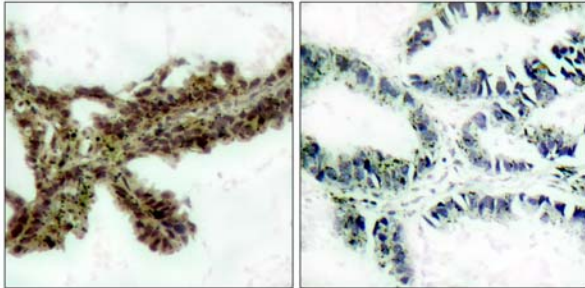


Akt(Phospho-Thr308) Antibody

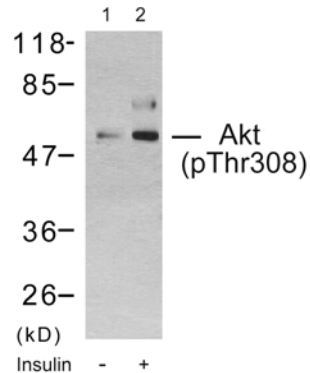
Catalog Number 11055

(For Research Use Only)

- Catalog Number:** 11055-1, 11055-2, 11055
Amount: 50µg/50µl, 100µg/100µl, 200µg/200µl
Form of Antibody: Rabbit IgG in phosphate buffered saline (without Mg²⁺ and Ca²⁺), pH 7.4, 150mM NaCl, 0.02% sodium azide and 50% glycerol.
Storage/Stability: Store at -20°C/1 year
Immunogen: The antiserum was produced against synthesized phosphopeptide derived from human Akt around the phosphorylation site of Threonine 308 (M-K-T^P-F-C).
Purification: The antibody was affinity-purified from rabbit antiserum by affinity-chromatography using epitope-specific phosphopeptide. The antibody against non-phosphopeptide was removed by chromatography using non-phosphopeptide corresponding to the phosphorylation site.
Specificity/Sensitivity: Akt(Phospho-Thr308) Antibody detects endogenous levels of Akt only when phosphorylated at Threonine 308.
Reactivity: Human, Mouse, Rat
Applications: WB: 1:500~1:1000 IHC: 1:50~1:100
ELISA: 1:10000
Swiss-Prot No. : P31749
References: Tremblay F, et al. (2005)Diabetes; 54(9): 2674-84.
Xu BE, et al. (2005)J Biol Chem; 280(40): 34218-23.
Samuels Y, et al. (2005)Cancer Cell; 7(6): 561-73.
Di Maira G, et al. (2005)Cell Death Differ; 12(6): 668-77.



Immunohistochemical analysis of paraffin-embedded lung carcinoma, using Akt(Phospho-Thr308) Antibody(#11055). Left: Untreated; Right: Treated with synthesized phosphopeptide.



Western blot analysis using Akt(Phospho-Thr308) Antibody(#11055): Line1: The extracts from 293 cells untreated; Line2: The extracts from 293 cells treated with insulin.