

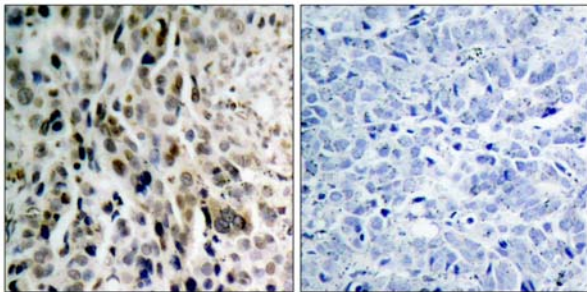


## Chk2(Phospho-Thr68) Antibody

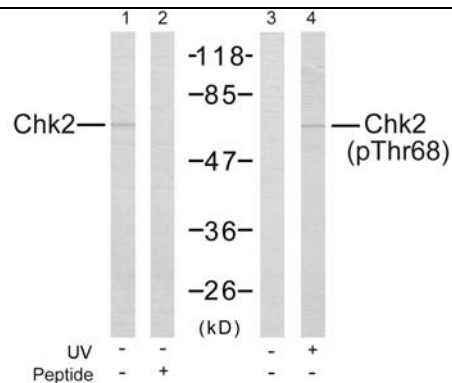
Catalog Number 11061

(For Research Use Only)

- Catalog Number:** 11061-1, 11061-2, 11061  
**Amount:** 50µg/50µl, 100µg/100µl, 200µg/200µl  
**Form of Antibody:** Rabbit IgG in phosphate buffered saline (without Mg<sup>2+</sup> and Ca<sup>2+</sup>), pH 7.4, 150mM NaCl, 0.02% sodium azide and 50% glycerol.  
**Storage/Stability:** Store at -20°C/1 year  
**Immunogen:** The antiserum was produced against synthesized phosphopeptide derived from human Chk2 around the phosphorylation site of Threonine 68 (V-S-T<sup>P</sup>-Q-E).  
**Purification:** The antibody was affinity-purified from rabbit antiserum by affinity-chromatography using epitope-specific phosphopeptide. The antibody against non-phosphopeptide was removed by chromatography using non-phosphopeptide corresponding to the phosphorylation site.  
**Specificity/Sensitivity:** Chk2(Phospho-Thr68) Antibody detects endogenous levels of Chk2 only when phosphorylated at Threonine 68.  
**Reactivity:** Human, Mouse, Rat  
**Applications:** WB: 1:500~1:1000 IHC: 1:50~1:100  
ELISA: 1:20000  
**Swiss-Prot No. :** O96017  
**References:** Gorgoulis VG, et al. (2005) Nature; 434(7035): 907-13.  
Falck J, et al. (2005) Nature; 434(7033): 605-11.  
Jin ZH, et al. (2005) Oncogene; 24(12): 1973-81.  
Li J, et al. (2005) J Biol Chem; 280(12): 12041-50.



Immunohistochemical analysis of paraffin-embedded lung carcinoma. Left: Using Chk2 (Phospho-Thr68) Antibody (#11061); Right: The same antibody preincubated with synthesized phosphopeptide.



Western blot analysis of the extracts from Jurkat cells untreated or treated with UV using Chk2(Ab-68) Antibody (#21087) and Chk2(Phospho-Thr68) Antibody (#11061): Line1: Using #21087; Line2: Using #21087 preincubated with synthesized peptide. Line3: Using #11061; Line4: Using #11061.