

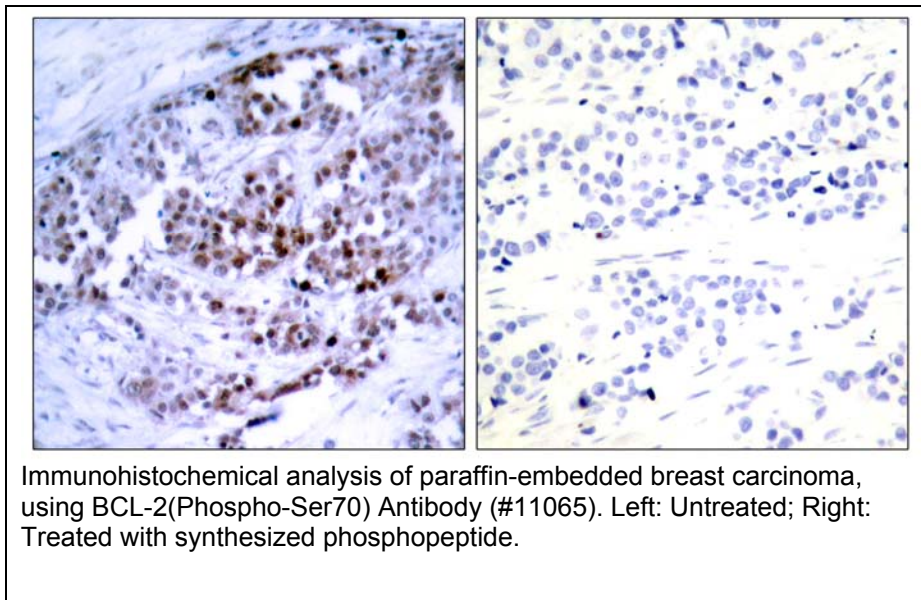


BCL-2(Phospho-Ser70) Antibody

Catalog Number 11065

(For Research Use Only)

- Catalog Number:** 11065-1, 11065-2, 11065
Amount: 50µg/50µl, 100µg/100µl, 200µg/200µl
Form of Antibody: Rabbit IgG in phosphate buffered saline (without Mg²⁺ and Ca²⁺), pH 7.4, 150mM NaCl, 0.02% sodium azide and 50% glycerol.
Storage/Stability: Store at -20°C/1 year
Immunogen: The antiserum was produced against synthesized phosphopeptide derived from human BCL-2 around the phosphorylation site of Serine 70.
Purification: The antibody was affinity-purified from rabbit antiserum by affinity-chromatography using epitope-specific phosphopeptide. The antibody against non-phosphopeptide was removed by chromatography using non-phosphopeptide corresponding to the phosphorylation site.
Specificity/Sensitivity: BCL-2(Phospho-Ser70) Antibody detects endogenous levels of BCL-2 only when phosphorylated at Serine 70.
Reactivity: Human
Applications: IHC: 1:50~1:100 ELISA: 1:10000
IP: Various Dilution
Swiss-Prot No. : P10415
References: Muller IM, et al. (2005)Mol Pharmacol.
Jin Z, Gao F,et al. J Biol Chem 2004 Sep 17; 279(38): 40209-19.
Kumar Biswas S,et al. Mol Cancer Ther 2004 Mar; 3(3): 327-34.
Huang ST,et al. (2002)FASEB J; 16(8): 825-32.
Yamamoto K,et al. (1999) Mol Cell Biol; 19(12): 8469-78.



Immunohistochemical analysis of paraffin-embedded breast carcinoma, using BCL-2(Phospho-Ser70) Antibody (#11065). Left: Untreated; Right: Treated with synthesized phosphopeptide.