

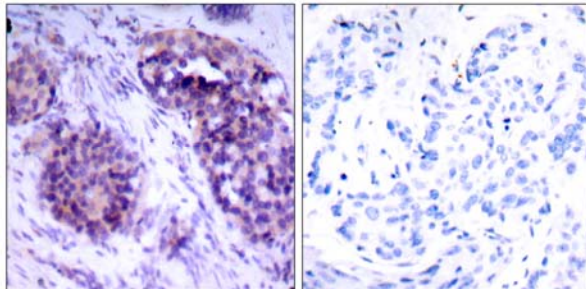


## BCL-XL (Phospho-Ser62) Antibody

Catalog Number 11066

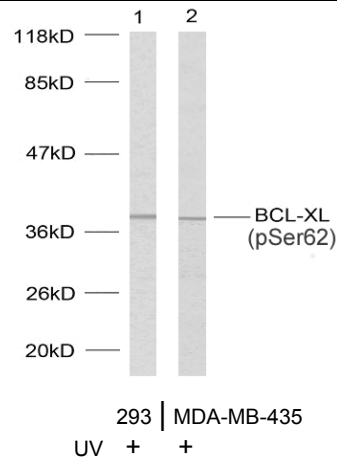
(For Research Use Only)

- Catalog Number:** 11066-1, 11066-2, 11066  
**Amount:** 50µg/50µl, 100µg/100µl, 200µg/200µl  
**Form of Antibody:** Rabbit IgG in phosphate buffered saline (without Mg<sup>2+</sup> and Ca<sup>2+</sup>), pH 7.4, 150mM NaCl, 0.02% sodium azide and 50% glycerol.  
**Storage/Stability:** Store at -20°C/1 year  
**Immunogen:** The antiserum was produced against synthesized phosphopeptide derived from human BCL-XL around the phosphorylation site of serine 62 (A-D-S<sup>P</sup>-P-A).  
**Purification:** The antibody was affinity-purified from rabbit antiserum by affinity-chromatography using epitope-specific phosphopeptide. The antibody against non-phosphopeptide was removed by chromatography using non-phosphopeptide corresponding to the phosphorylation site.  
**Specificity/Sensitivity:** BCL-XL (phospho-Ser62) antibody detects endogenous levels of BCL-XL only when phosphorylated at serine 62.  
**Reactivity:** Human, Mouse, Rat  
**Applications:** WB: 1:500~1:1000 IHC: 1:50~1:100  
ELISA: 1:10000  
**Swiss-Prot No. :** Q07817  
**References:** Basu A, et.al. (2003) Mar 13; 538(1-3): 41-7.  
Cheng E.H.-Y., et.al. (1996) Nature 379:554-556.  
Sattler M. et.al. (1997), Science 275:983-986.  
Muchmore S.W. et.al (1996). Nature 381:335-341.  
Yu J., Zhang L. Mol. (2001) Cell 7:673-682.



P-Peptide - +

Immunohistochemical analysis of paraffin-embedded human breast carcinoma tissue using BCL-XL (phospho-Ser62) antibody (#11066).



Western blot analysis using BCL-XL (phospho-Ser62) antibody (#11066).