

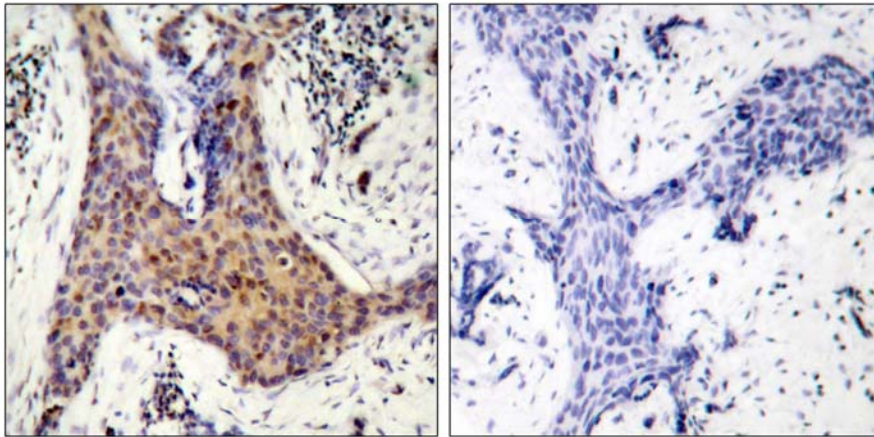


## BAD (Phospho-Ser136) Antibody

Catalog Number 11068

(For Research Use Only)

- Catalog Number:** 11068-1, 11068-2, 11068  
**Amount:** 50µg/50µl, 100µg/100µl, 200µg/200µl  
**Form of Antibody:** Rabbit IgG in phosphate buffered saline (without Mg<sup>2+</sup> and Ca<sup>2+</sup>), pH 7.4, 150mM NaCl, 0.02% sodium azide and 50% glycerol.  
**Storage/Stability:** Store at -20 °C /1 year  
**Immunogen:** The antiserum was produced against synthesized phosphopeptide derived from human BAD around the phosphorylation site of serine 136 (S-R-S<sup>P</sup>-A-P).  
**Purification:** The antibody was affinity-purified from rabbit antiserum by affinity-chromatography using epitope-specific phosphopeptide. The antibody against non-phosphopeptide was removed by chromatography using non-phosphopeptide corresponding to the phosphorylation site.  
**Specificity/Sensitivity:** BAD (phospho-Ser136) antibody detects endogenous levels of BAD only when phosphorylated at serine136.  
**Reactivity:** Human, Mouse, Rat  
**Applications:** WB: 1:500~1:1000 IHC: 1:50~1:100  
ELISA: 1:20000  
**Swiss-Prot No. :** Q92934  
**References:** Wang XQ, et al. (2001). J Biol Chem.276 (48): 44504-44511.  
Lee YI, et al. (2001). J Biol Chem.276 (20): 16969-16977.  
Maiti D, et al. (2001). J Biol Chem.276 (1): 329-333.



P-Peptide

-

+

Immunohistochemical analysis of paraffin-embedded human breast carcinoma tissue using BAD (phospho-Ser136) antibody (#11068).