

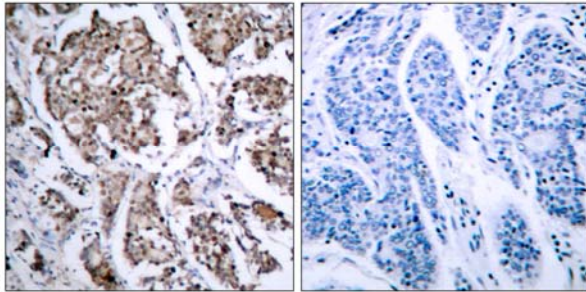


BAD (Phospho-Ser155) Antibody

Catalog Number 11069

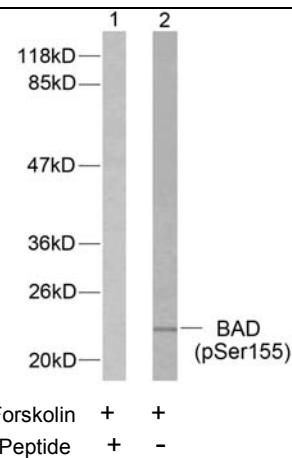
(For Research Use Only)

- Catalog Number:** 11069-1, 11069-2, 11069
Amount: 50µg/50µl, 100µg/100µl, 200µg/200µl
Form of Antibody: Rabbit IgG in phosphate buffered saline (without Mg²⁺ and Ca²⁺), pH 7.4, 150mM NaCl, 0.02% sodium azide and 50% glycerol.
Storage/Stability: Store at -20 °C /1 year
Immunogen: The antiserum was produced against synthesized phosphopeptide derived from human BAD around the phosphorylation site of serine 155 (R-M-S^P-D-E).
Purification: The antibody was affinity-purified from rabbit antiserum by affinity-chromatography using epitope-specific phosphopeptide. The antibody against non-phosphopeptide was removed by chromatography using non-phosphopeptide corresponding to the phosphorylation site.
Specificity/Sensitivity: BAD (phospho-Ser155) antibody detects endogenous levels of BAD only when phosphorylated at serine 155.
Reactivity: Human, Mouse, Rat
Applications: WB: 1:500~1:1000 IHC: 1:50~1:100
ELISA: 1:10000
Swiss-Prot No. : Q92934
References: Moon EY, et al. (2003). Blood.101(10): 4122-4130.



P-Peptide - +

Immunohistochemical analysis of paraffin-embedded human breast carcinoma tissue using BAD (phospho-Ser155) antibody (#11069).



Western blot analysis of extracts from 293 cells using BAD (phospho-Ser155) antibody (#11069).