



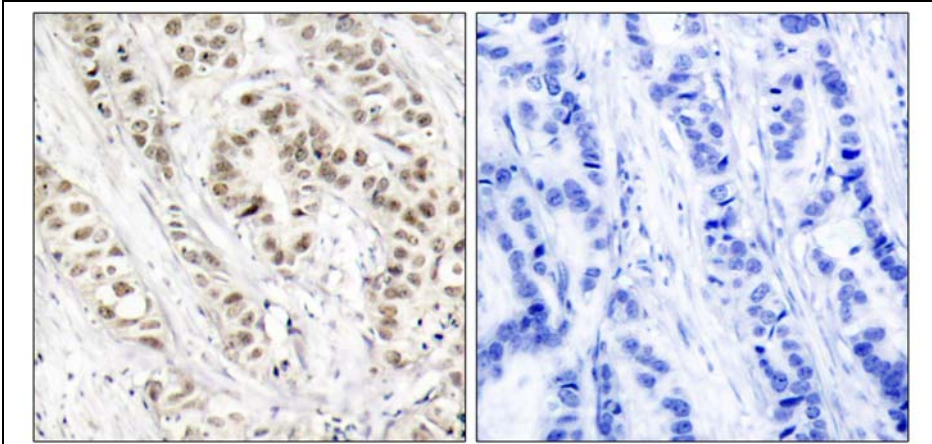
Signosis
BioSignal Capture

BRCA1 (Phospho-Ser1524) Antibody

Catalog Number 11117

(For Research Use Only)

- Catalog Number:** 11117-1, 11117-2, 11117
Amount: 50µg/50µl, 100µg/100µl, 200µg/200µl
Swiss-Prot No. : P38398
All Names: BRCA1, Breast cancer type 1 susceptibility protein
All Sites: Human: Ser1524
Form of Antibody: Rabbit IgG in phosphate buffered saline (without Mg²⁺ and Ca²⁺), pH 7.4, 150mM NaCl, 0.02% sodium azide and 50% glycerol.
Storage/Stability: Store at -20°C/1 year
Immunogen: The antiserum was produced against synthesized phosphopeptide derived from human BRCA1 around the phosphorylation site of serine 1524 (Y-P-S^P-Q-E).
Purification: The antibody was affinity-purified from rabbit antiserum by affinity-chromatography using epitope-specific phosphopeptide. The antibody against non-phosphopeptide was removed by chromatography using non-phosphopeptide corresponding to the phosphorylation site.
Specificity/Sensitivity: BRCA1 (phospho-Ser1524) antibody detects endogenous levels of BRCA1 only when phosphorylated at serine 1524.
Reactivity: Human
Applications: IHC: 1:50~1:100 ELISA: 1:10000
References: Lin SY, et al. (2004) Proc Natl Acad Sci U S A, 101(17): 6484-6489.
Zhang J, et al. (2004) Mol Cell Biol; 24(2): 708-718.
Beger C, et al. (2001) Proc Natl Acad Sci U S A; 98(1): 130-135.
Gardner K, et al. (2001) Breast Cancer Res; 3(1): 11-13.
Zheng L, et al. (2001) Proc Natl Acad Sci U S A; 98(17): 9587-9592.



P-Peptide - +

Immunohistochemical analysis of paraffin-embedded human breast carcinoma tissue using BRCA1 (phospho-Ser1524) antibody (#11117).