

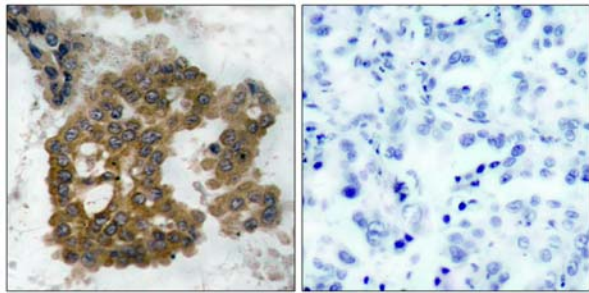


Akt2 (Phospho-Ser474) Antibody

Catalog Number 11124

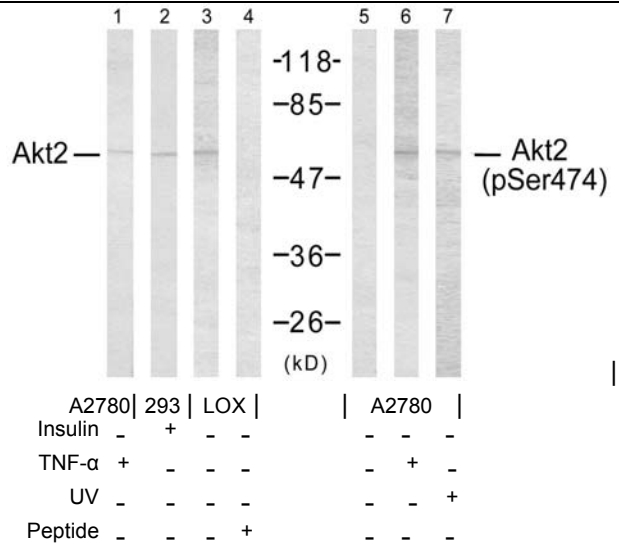
(For Research Use Only)

- Catalog Number:** 11124-1, 11124-2, 11124
Amount: 50µg/50µl, 100µg/100µl, 200µg/200µl
Form of Antibody: Rabbit IgG in phosphate buffered saline (without Mg²⁺ and Ca²⁺), pH 7.4, 150mM NaCl, 0.02% sodium azide and 50% glycerol.
Storage/Stability: Store at -20°C/1 year
Immunogen: The antiserum was produced against synthesized phosphopeptide derived from human Akt2 around the phosphorylation site of serine 474 (Q-F-S^P-Y-S).
Purification: The antibody was affinity-purified from rabbit antiserum by affinity-chromatography using epitope-specific phosphopeptide. The antibody against non-phosphopeptide was removed by chromatography using non-phosphopeptide corresponding to the phosphorylation site.
Specificity/Sensitivity: Akt2 (phospho-Ser474) antibody detects endogenous levels of Akt2 only when phosphorylated at serine 474.
Reactivity: Human, Mouse, Rat
Applications: WB: 1:500~1:1000 IHC: 1:50~1:100
 ELISA: 1:20000
Swiss-Prot No. : P31751
References: Sun M, et al. (2001) Cancer Res; 61(16): 5985-91.
 Yuan ZQ, et al. (2000) Oncogene; 19(19): 2324-30.
 Meier R, et al. (1997) J Biol Chem; 272(48): 30491-7.



P-Peptide - +

Immunohistochemical analysis of paraffin-embedded human lung carcinoma tissue using Akt2 (phospho-Ser474) antibody (#11124).



Western blot analysis using Akt2 (Ab-474) antibody (#21155, Line 1, 2, 3 and 4) and Akt2 (phospho-Ser474) antibody (#11124, Line 5, 6 and 7).