

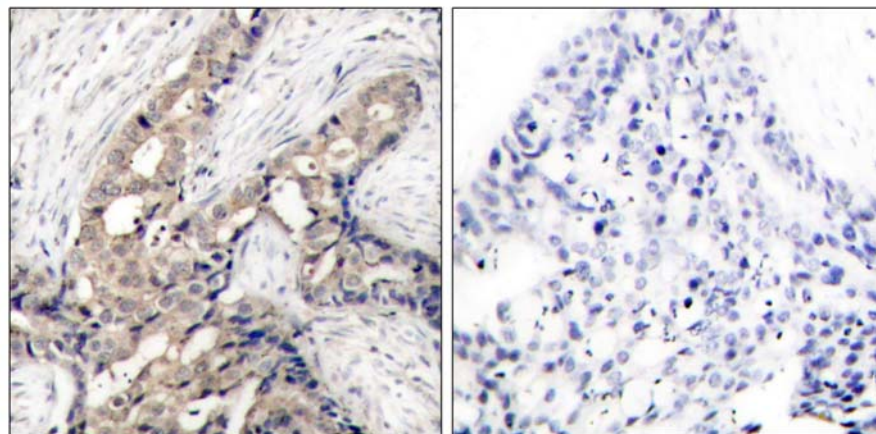


c-Abl (Phospho-Tyr412) Antibody

Catalog Number 11125

(For Research Use Only)

- Catalog Number:** 11125-1, 11125-2, 11125
Amount: 50µg/50µl, 100µg/100µl, 200µg/200µl
Swiss-Prot No. : P00519
All Names: c-ABL, ABL1, JTK7, Proto-oncogene tyrosine-protein kinase ABL1, p150
All Sites: Human: Tyr412; Mouse: Tyr412
Form of Antibody: Rabbit IgG in phosphate buffered saline (without Mg²⁺ and Ca²⁺), pH 7.4, 150mM NaCl, 0.02% sodium azide and 50% glycerol.
Storage/Stability: Store at -20°C/1 year
Immunogen: The antiserum was produced against synthesized phosphopeptide derived from human c-Abl around the phosphorylation site of tyrosine 412 (D-T-Y^P-T-A).
Purification: The antibody was affinity-purified from rabbit antiserum by affinity-chromatography using epitope-specific phosphopeptide. The antibody against non-phosphopeptide was removed by chromatography using non-phosphopeptide corresponding to the phosphorylation site.
Specificity/Sensitivity: c-Abl (phospho-Tyr412) antibody detects endogenous levels of c-Abl only when phosphorylated at tyrosine 412.
Reactivity: Human, Mouse
Applications: IHC: 1:50~1:100 ELISA: 1:4000
References: Kawai H, et al. (2002) Mol Cell Biol 22(17): 6079-6088.
Vogt Sionov R, et al. (2001) Mol Cell Biol 21(17): 5869-5878.
Kharbanda S, et al. (2000) Mol Cell Biol 20(14): 4979-4989.
Yoshida K, et al. (2002) Mol Cell Biol 22(10): 3292-3300.



P-Peptide

-

+

Immunohistochemical analysis of paraffin-embedded human breast carcinoma tissue using c-Abl (phospho-Tyr412) antibody (#11125).

