

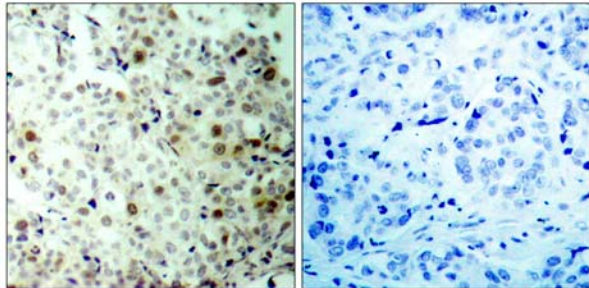


CDK2(Phospho-Thr160) Antibody

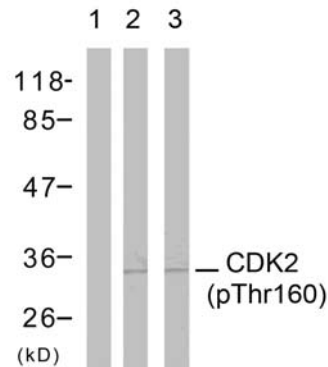
Catalog Number 11133

(For Research Use Only)

- Catalog Number:** 11133-1, 11133-2, 11133
Amount: 50µg/50µl, 100µg/100µl, 200µg/200µl
Form of Antibody: Rabbit IgG in phosphate buffered saline (without Mg²⁺ and Ca²⁺), pH 7.4, 150mM NaCl, 0.02% sodium azide and 50% glycerol.
Storage/Stability: Store at -20°C/1 year
Immunogen: The antiserum was produced against synthesized phosphopeptide derived from human CDK2 around the phosphorylation site of Threonine 160(T-Y-T^P-H-E).
Purification: The antibody was affinity-purified from rabbit antiserum by affinity-chromatography using epitope-specific phosphopeptide. The antibody against non-phosphopeptide was removed by chromatography using non-phosphopeptide corresponding to the phosphorylation site.
Specificity/Sensitivity: CDK2(Phospho-Thr160) Antibody detects endogenous levels of CDK2 only when phosphorylated at Threonine 160.
Reactivity: Human, Mouse, Rat
Applications: WB: 1:500~1:1000 IHC: 1:50~1:100
ELISA: 1:4000
Swiss-Prot No. : P24941
References: Ukomadu C, et al.(2003) J Biol Chem; 278(7): 4840-6.
Morris MC, et al.(2002)J Biol Chem; 277(26): 23847-53.
Brown NR, et al.(1999)J Biol Chem; 274(13): 8746-56.
Liu Y, et al.(2004) J Biol Chem; 279(6): 4507-14.



Immunohistochemical analysis of paraffin-embedded breast carcinoma, using CDK2 (Phospho-Thr160) Antibody (#11133). Left: Untreated; Right: Treated with synthesized phosphopeptide.



Western blot analysis using CDK2(Phospho-Thr160) Antibody(#11133). Line1: The extracts from A2780 cells using #11133 preincubated with synthesized phosphopeptide; Line2: The extracts from A2780 cells; Line3: The extracts from MDA-MB-435 cells.