

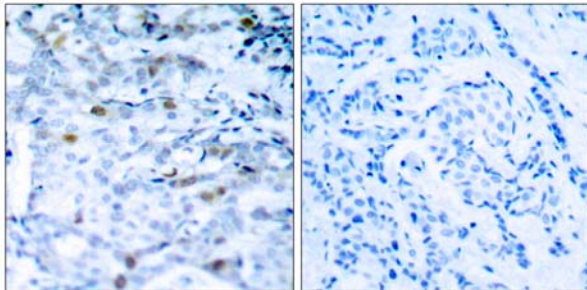


## CDC2(Phospho-Thr161) Antibody

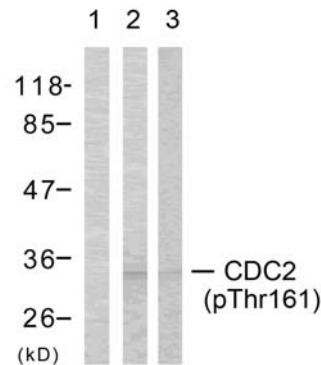
Catalog Number 11134

(For Research Use Only)

- Catalog Number:** 11134-1, 11134-2, 11134  
**Amount:** 50µg/50µl, 100µg/100µl, 200µg/200µl  
**Form of Antibody:** Rabbit IgG in phosphate buffered saline (without Mg<sup>2+</sup> and Ca<sup>2+</sup>), pH 7.4, 150mM NaCl, 0.02% sodium azide and 50% glycerol.  
**Storage/Stability:** Store at -20°C/1 year  
**Immunogen:** The antiserum was produced against synthesized phosphopeptide derived from human CDC2 around the phosphorylation site of Threonine161 (T-Y-T<sup>P</sup>-H-E).  
**Purification:** The antibody was affinity-purified from rabbit antiserum by affinity-chromatography using epitope-specific phosphopeptide. The antibody against non-phosphopeptide was removed by chromatography using non-phosphopeptide corresponding to the phosphorylation site.  
**Specificity/Sensitivity:** CDC2(Phospho-Thr161) Antibody detects endogenous levels of CDC2 only when phosphorylated at Threonine 161.  
**Reactivity:** Human, Mouse, Rat  
**Applications:** WB: 1:500~1:1000 IHC: 1:50~1:100  
ELISA: 1:4000  
**Swiss-Prot No. :** P06493  
**References:** Ukomadu C, et al.(2003) J Biol Chem; 278(7): 4840-6.  
Morris MC, et al.(2002)J Biol Chem; 277(26): 23847-53.  
Brown NR, et al.(1999)J Biol Chem; 274(13): 8746-56.  
Liu Y, et al.(2004)J Biol Chem; 279(6): 4507-14.



Immunohistochemical analysis of paraffin-embedded breast carcinoma, using CDC2(Phospho-Thr161) Antibody (#11134). Left: Untreated; Right: Treated with synthesized phosphopeptide.



Western blot analysis using CDC2 (Phospho-Thr161) Antibody(#11134): Line1: The extracts from COLO cells using #11134 preincubated with synthesized phosphopeptide; Line2: The extracts from COLO cells. Line3: The extracts from K562 cells.