

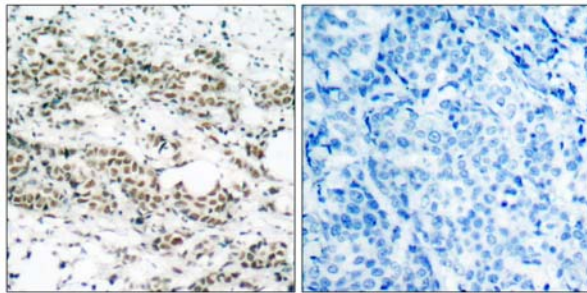


AFX (Phospho-Ser197) Antibody

Catalog Number 11137

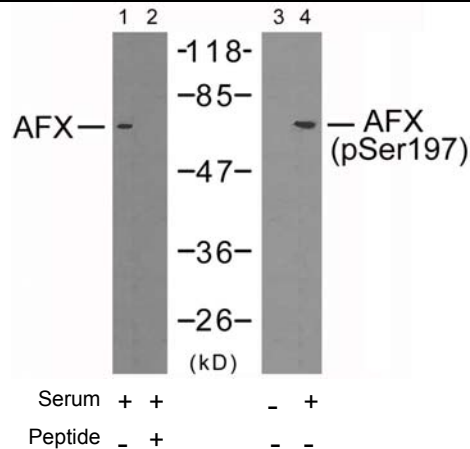
(For Research Use Only)

- Catalog Number:** 11137-1, 11137-2, 11137
Amount: 50µg/50µl, 100µg/100µl, 200µg/200µl
Form of Antibody: Rabbit IgG in phosphate buffered saline (without Mg²⁺ and Ca²⁺), pH 7.4, 150mM NaCl, 0.02% sodium azide and 50% glycerol.
Storage/Stability: Store at -20°C/1 year
Immunogen: The antiserum was produced against synthesized phosphopeptide derived from human AFX around the phosphorylation site of serine 197 (A-A-S^P-M-D).
Purification: The antibody was affinity-purified from rabbit antiserum by affinity-chromatography using epitope-specific phosphopeptide. The antibody against non-phosphopeptide was removed by chromatography using non-phosphopeptide corresponding to the phosphorylation site.
Specificity/Sensitivity: AFX (phospho-Ser197) antibody detects endogenous levels of AFX only when phosphorylated at serine 197.
Reactivity: Human, Mouse, Rat
Applications: WB: 1:500~1:1000 IHC: 1:50~1:100
 ELISA: 1:20000
Swiss-Prot No. : P98177
References: Di Maira G, et al. (2005) Cell Death Differ; 12(6): 668-77.
 Essers MA, et al. EMBO J 2004 Nov. 11.
 Brownawell AM, (2001) Mol Cell Biol; 21(10): 3534-46.
 Kops GJ, et al. (1999) Nature; 398(6728): 630-4.



P-Peptide - +

Immunohistochemical analysis of paraffin-embedded human breast carcinoma tissue using AFX (phospho-Ser197) antibody (#11137).



Western blot analysis of extracts from 293 cells using AFX (Ab-197) antibody (#21162, Line 1 and 2) and AFX (phospho-Ser197) antibody (#11137, Line 3 and 4).