



## cofilin (Phospho-Ser3) Antibody

Catalog Number 11139

(For Research Use Only)

**Catalog Number:** 11139-1, 11139-2, 11139

**Amount:** 50µg/50µl, 100µg/100µl, 200µg/200µl

**Form of Antibody:** Rabbit IgG in phosphate buffered saline (without Mg<sup>2+</sup> and Ca<sup>2+</sup>), pH 7.4, 150mM NaCl, 0.02% sodium azide and 50% glycerol.

**Storage/Stability:** Store at -20°C/1 year

**Immunogen:** The antiserum was produced against synthesized phosphopeptide derived from human cofilin around the phosphorylation site of serine 3 (M-A-S<sup>P</sup>-G-V).

**Purification:** The antibody was affinity-purified from rabbit antiserum by affinity-chromatography using epitope-specific phosphopeptide. The antibody against non-phosphopeptide was removed by chromatography using non-phosphopeptide corresponding to the phosphorylation site.

**Specificity/Sensitivity:** cofilin (phospho-Ser3) antibody detects endogenous levels of cofilin only when phosphorylated at serine 3.

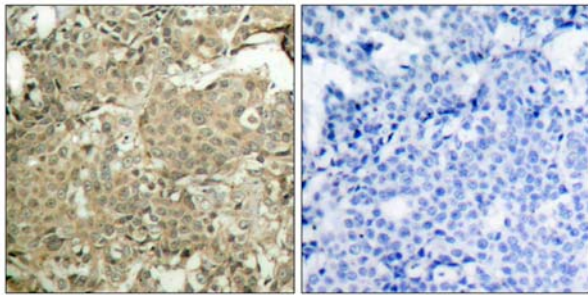
**Reactivity:** Human, Mouse, Rat

**Applications:** WB: 1:500~1:1000 IHC: 1:50~1:100

ELISA: 1:10000

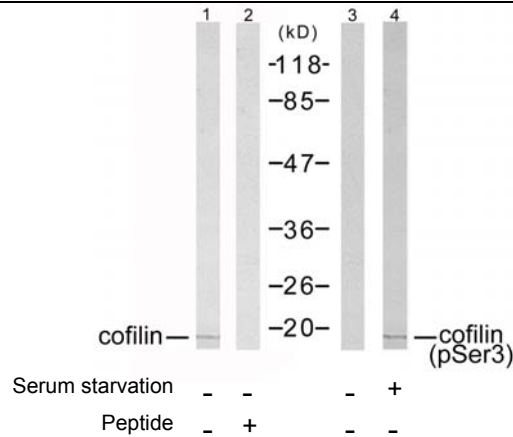
**Swiss-Prot No. :** P23528

**References:** Kobayashi M, et al. (2006) EMBO J 25(4): 713-26.  
Wang Y, et al. (2005) Biol Chem 280(13): 12683-9.  
Smith-Beckerman DM, et al. (2005) Mol Cell Proteomics: 156-68.



P-Peptide - +

Immunohistochemical analysis of paraffin-embedded human breast carcinoma tissue using cofilin (phospho-Ser3) antibody (#11139).



Western blot analysis of extracts from COLO205 cells using cofilin (Ab-1022) antibody (#21164, Line 1 and 2) and cofilin (phospho-Ser3) antibody (#11139, Line 3 and 4).