

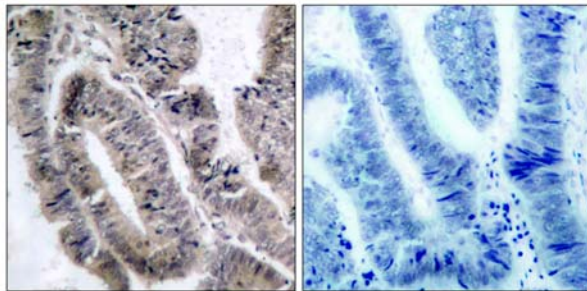


AMPK1/AMPK2(Phospho-Ser485/Ser491) Antibody

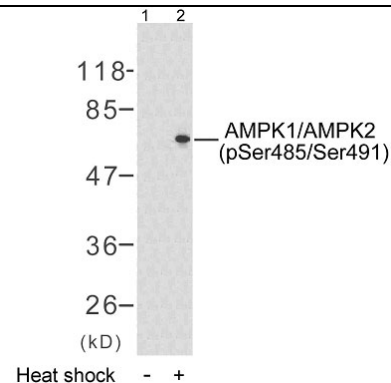
Catalog Number 11174

(For Research Use Only)

- Catalog Number:** 11174-1, 11174-2, 11174
Amount: 50µg/50µl, 100µg/100µl, 200µg/200µl
Form of Antibody: Rabbit IgG in phosphate buffered saline (without Mg²⁺ and Ca²⁺), pH 7.4, 150mM NaCl, 0.02% sodium azide and 50% glycerol.
Storage/Stability: Store at -20°C/1 year
Immunogen: The antiserum was produced against synthesized phosphopeptide derived from human AMPK1/AMPK2 around the phosphorylation site of Serine 485/491(S-G-S^P-V-S).
Purification: The antibody was affinity-purified from rabbit antiserum by affinity-chromatography using epitope-specific phosphopeptide. The antibody against non-phosphopeptide was removed by chromatography using non-phosphopeptide corresponding to the phosphorylation site.
Specificity/Sensitivity: AMPK1/AMPK2(Phospho-Ser485/Ser491) Antibody detects endogenous levels of AMPK1/AMPK2 only when phosphorylated at Serine 485 or Serine 491.
Reactivity: Human, Mouse, Rat
Applications: WB: 1:500~1:1000 IHC: 1:50~1:100
ELISA: 1:20000
Swiss-Prot No. : Q13131 P54646
References: Kim JE, et al. (2005) J Proteome Res. 4(4): 1339-1346.
Woods A, et al. (2003) J Biol Chem. 278(31): 28434-28442.



Immunohistochemical analysis of paraffin-embedded colon carcinoma, using AMPK1/AMPK2 (Phospho-Ser485/Ser491) Antibody(#11174). Left: Untreated; Right: Treated with synthesized phosphopeptide.



Western blot analysis using AMPK1/AMPK2 (Phospho-Ser485/Ser491) Antibody (#11174). Line1: The extracts from HeLa cells; Line2: The extracts from HeLa cells treated with heat shock.