

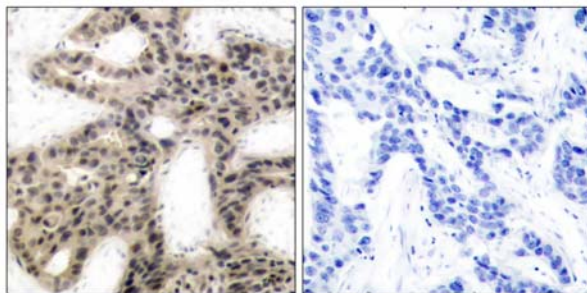


4E-BP1 (Phospho-Thr45) Antibody

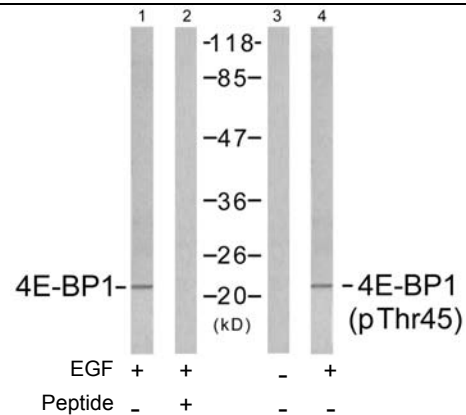
Catalog Number 11223

(For Research Use Only)

- Catalog Number:** 11223-1, 11223-2, 11223
Amount: 50µg/50µl, 100µg/100µl, 200µg/200µl
Swiss-Prot No. : Q13541
All Names: 4EBP1, EIF4EBP1, Eukaryotic translation initiation factor 4E binding protein 1, Insulin-stimulated EIF-4E binding protein PHAS-I, P/OKCL.6, PHAS-1, PHAS-I
All Sites: Human: Thr45 or Thr46; Mouse: Thr44; Rat: Thr44
Form of Antibody: Rabbit IgG in phosphate buffered saline (without Mg²⁺ and Ca²⁺), pH 7.4, 150mM NaCl, 0.02% sodium azide and 50% glycerol.
Storage/Stability: Store at -20°C/1 year
Immunogen: The antiserum was produced against synthesized phosphopeptide derived from human 4E-BP1 around the phosphorylation site of threonine 45 (S-T-T^P-P-G).
Purification: The antibody was affinity-purified from rabbit antiserum by affinity-chromatography using epitope-specific phosphopeptide. The antibody against non-phosphopeptide was removed by chromatography using non-phosphopeptide corresponding to the phosphorylation site.
Specificity/Sensitivity: 4E-BP1 (phospho-Thr45) antibody detects endogenous levels of 4E-BP1 only when phosphorylated at threonine 45. This antibody may cross-react with 4E-BP2 and 4E-BP3 when phosphorylated at equivalent sites.
Reactivity: Human, Mouse, Rat
Applications: WB: 1:500~1:1000 IHC: 1:50~1:100
 ELISA: 1:20000
References: Gingras AC, et al. (1998) *Genes Dev* 12(4): 502-513.
 Brugarolas J, et al. (2004) *Genes Dev* 18(23): 2893-2904.
 Kumar V, et al. (2000) *EMBO J* 19(5): 1087-1097.
 Moody CA, et al. (2005) *J Virol* 79(9): 5499-5506.
 Burnett PE, et al. (1998) *Proc Natl Acad Sci U S A* 95(4): 1432-1437.



P-Peptide - +
 Immunohistochemical analysis of paraffin-embedded human breast carcinoma tissue using 4E-BP1 (phospho-Thr45) antibody (#11223).



Western blot analysis of extracts from MDA435 cells untreated or treated with EGF (200nm, 5min), using 4E-BP1 (Ab-45) antibody (#21216, Line1 and 2) and 4E-BP1 (phospho-Thr45) antibody (#11223, Line 3 and 4).

