

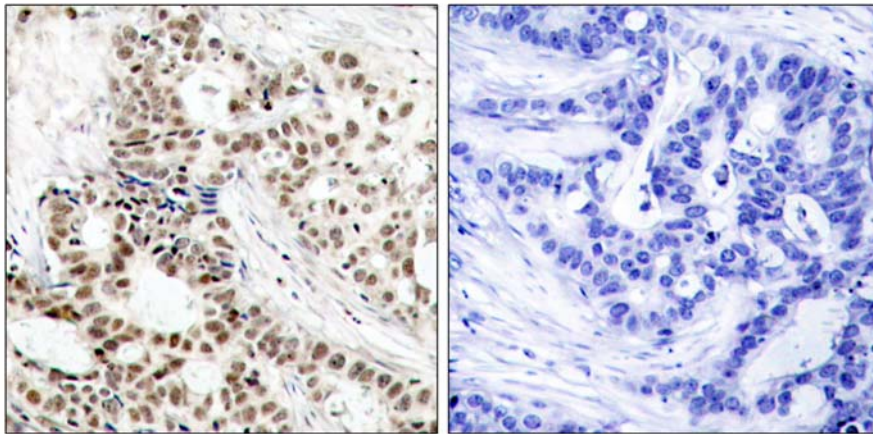


## BRCA1 (Phospho-Ser1423) Antibody

Catalog Number 11242

(For Research Use Only)

- Catalog Number:** 11242-1, 11242-2, 11242  
**Amount:** 50µg/50µl, 100µg/100µl, 200µg/200µl  
**Swiss-Prot No. :** P38398  
**All Names:** BRCA1, Breast cancer type 1 susceptibility protein  
**All Sites:** Human: Ser1423  
**Form of Antibody:** Rabbit IgG in phosphate buffered saline (without Mg<sup>2+</sup> and Ca<sup>2+</sup>), pH 7.4, 150mM NaCl, 0.02% sodium azide and 50% glycerol.  
**Storage/Stability:** Store at -20°C/1 year  
**Immunogen:** The antiserum was produced against synthesized phosphopeptide derived from human BRCA1 around the phosphorylation site of serine 1423 (H-G-S<sup>P</sup>-Q-P).  
**Purification:** The antibody was affinity-purified from rabbit antiserum by affinity-chromatography using epitope-specific phosphopeptide. The antibody against non-phosphopeptide was removed by chromatography using non-phosphopeptide corresponding to the phosphorylation site.  
**Specificity/Sensitivity:** BRCA1 (phospho-Ser1423) antibody detects endogenous levels of BRCA1 only when phosphorylated at serine 1423.  
**Reactivity:** Human  
**Applications:** IHC: 1:50~1:100 ELISA: 1:4000  
**References:** Kim ST, et al. (2002) Genes Dev; 16(5): 560-570.  
Arlt MF, et al. (2004) Mol Cell Biol; 24(15): 6701-6709.  
Zhang J, et al. (2004) Mol Cell Biol; 24(2): 708-718.  
Greenberg RA, et al. (2006) Genes Dev; 20(1): 34-46.  
Tibbetts RS, et al. (2000) Genes Dev; 14(23): 2989-3002.



P-Peptide

-

+

Immunohistochemical analysis of paraffin-embedded human breast carcinoma tissue using BRCA1 (phospho-Ser1423) antibody (#11242).