



Cortactin (Phospho-Tyr466) Antibody

Catalog Number 11272

(For Research Use Only)

Catalog Number: 11272-1, 11272-2, 11272

Amount: 50µg/50µl, 100µg/100µl, 200µg/200µl

Swiss-Prot No. : Q14247

All Names: Amplexin, CTTN, EMS1, Oncogene EMS1, SRC8, Src substrate cortactin

All Sites: Human: Tyr470; Mouse: Tyr466; Rat: Tyr428

Form of Antibody: Rabbit IgG in phosphate buffered saline (without Mg²⁺ and Ca²⁺), pH 7.4, 150mM NaCl, 0.02% sodium azide and 50% glycerol.

Storage/Stability: Store at -20°C/1 year

Immunogen: The antiserum was produced against synthesized phosphopeptide derived from human Cortactin around the phosphorylation site of tyrosine 466 (P-V-Y^P-E-T).

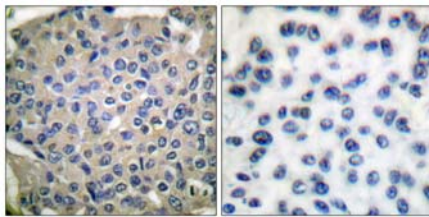
Purification: The antibody was affinity-purified from rabbit antiserum by affinity-chromatography using epitope-specific phosphopeptide. The antibody against non-phosphopeptide was removed by chromatography using non-phosphopeptide corresponding to the phosphorylation site.

Specificity/Sensitivity: Cortactin (phospho-Tyr466) antibody detects endogenous levels of Cortactin only when phosphorylated at tyrosine 466.

Reactivity: Human; Mouse; Rat

Applications: WB: 1:500~1:1000 IHC:1:50~1:100
ELISA: 1:20000

References: Julie A. Head, Mol. Biol. Cell, Aug 2003; 14: 3216.
Cherry Luo, J. Biol. Chem., Oct 2006; 281: 30081 - 30093.
Jianwei Zhu, J. Biol. Chem., Apr 2007; 10.1074.
David Hattan, J. Biol. Chem., Oct 2002; 277: 38596 - 38606.

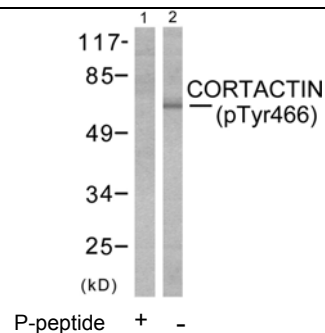


P-peptide

-

+

Immunohistochemical analysis of paraffin-embedded human breast carcinoma tissue using Cortactin (phospho-Tyr466) antibody (#11272).



Western blot analysis of extracts from cos-7 cells using Cortactin (phospho-Tyr466) antibody (#11272, Line 1 and 2).