

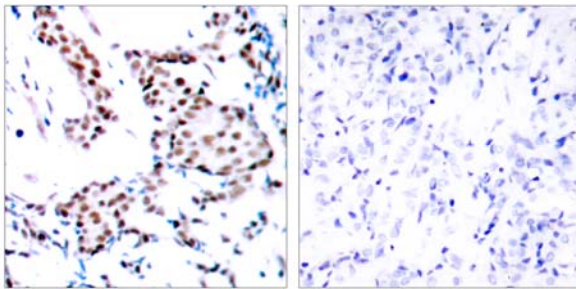


## c-Jun(Ab-170) Antibody

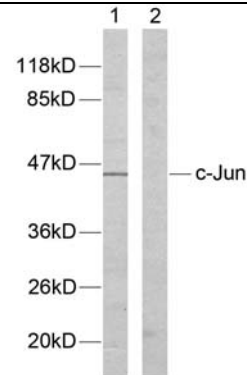
Catalog Number 21023

(For Research Use Only)

- Catalog Number:** 21023-1, 21023-2, 21023  
**Amount:** 50µg/50µl, 100µg/100µl, 200µg/200µl  
**Form of Antibody:** Rabbit IgG in phosphate buffered saline (without Mg<sup>2+</sup> and Ca<sup>2+</sup>), pH 7.4, 150mM NaCl, 0.02% sodium azide and 50% glycerol.  
**Storage/Stability:** Store at -20°C/1 year  
**Immunogen:** The antiserum was produced against synthesized non-phosphopeptide derived from human c-Jun around the phosphorylation site of Tyrosine 170.  
**Purification:** The antibody was affinity-purified from rabbit antiserum by affinity-chromatography using epitope-specific immunogen.  
**Specificity/Sensitivity:** c-Jun(Ab-170) Antibody detects endogenous levels of c-Jun protein around Tyrosine 170.  
**Reactivity:** Human, Mouse, Rat  
**Applications:** WB: 1:500~1:1000 IHC: 1:50~1:100  
ELISA: 1:20000 IP: Various Dilution  
**Swiss-Prot No. :** P05412  
**References:** Barila D, et al. (2000) EMBO J.19(2): 273-281.  
Binetruy B, et al. (1991) Nature. 351: 122-127.  
Smeal T, et al. (1991) Nature. 354:494-496.  
Derijard B, et al. (1994) Cell. 76:1025-1037.  
Kyriakis J M, et al. (1994) Nature. 369: 156-160.



Immunohistochemical analysis of paraffin-embedded breast carcinoma. Left: Using c-Jun(Ab-170) Antibody (#21023); Right: The same antibody preincubated with synthesized peptide.



Western blot analysis of extracts from HeLa cells. Line1: Using c-Jun(Ab-170) Antibody (#21023); Line2: The same antibody preincubated with synthesized peptide.