

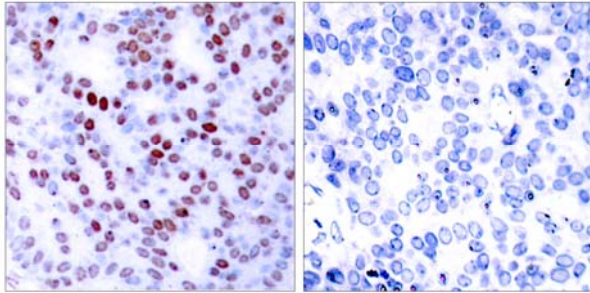


## c-Jun (Ab-243) Antibody

Catalog Number 21025

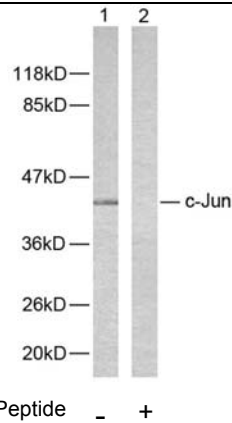
(For Research Use Only)

- Catalog Number:** 21025-1, 21025-2, 21025  
**Amount:** 50µg/50µl, 100µg/100µl, 200µg/200µl  
**Form of Antibody:** Rabbit IgG in phosphate buffered saline (without Mg<sup>2+</sup> and Ca<sup>2+</sup>), pH 7.4, 150mM NaCl, 0.02% sodium azide and 50% glycerol.  
**Storage/Stability:** Store at -20°C/1 year  
**Immunogen:** The antiserum was produced against synthesized non-phosphopeptide derived from human c-Jun around the phosphorylation site of serine 243.  
**Purification:** The antibody was affinity-purified from rabbit antiserum by affinity-chromatography using epitope-specific immunogen.  
**Specificity/Sensitivity:** c-Jun (Ab-243) antibody detects endogenous levels of total c-Jun protein.  
**Reactivity:** Human, Mouse, Rat  
**Applications:** WB: 1:500~1:1000 IHC: 1:50~1:100  
ELISA: 1:20000 IP: Various Dilution  
**Swiss-Prot No. :** P05412  
**References:** Boyle W J, et al. (1991) Cell. 64(3): 573-584.  
Binetruy B, et al. (1991) Nature. 351: 122-127.  
Smeal T, et al. (1991) Nature. 354:494-496.  
Derijard B, et al. (1994) Cell. 76:1025-1037.  
Kyriakis J M, et al. (1994) Nature. 369: 156-160.



Peptide - +

Immunohistochemical analysis of paraffin-embedded human breast carcinoma tissue using c-Jun (Ab-243) antibody (#21025).



Western blot analysis of extracts from HeLa cells using c-Jun (Ab-243) antibody (#21025).