

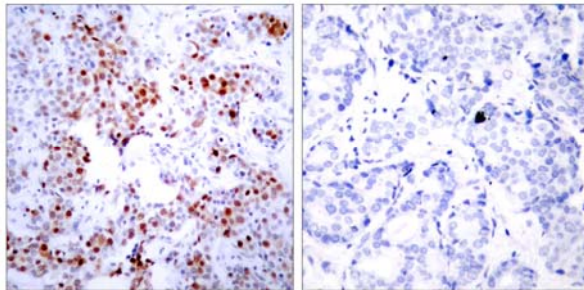


ATF-2(Ab-69 or 51) Antibody

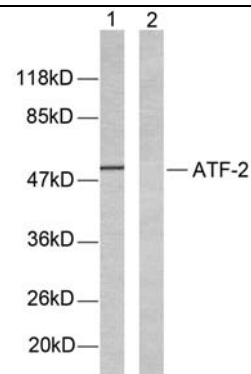
Catalog Number 21030

(For Research Use Only)

- Catalog Number:** 21030-1, 21030-2, 21030
Amount: 50µg/50µl, 100µg/100µl, 200µg/200µl
Form of Antibody: Rabbit IgG in phosphate buffered saline (without Mg²⁺ and Ca²⁺), pH 7.4, 150mM NaCl, 0.02% sodium azide and 50% glycerol.
Storage/Stability: Store at -20°C/1 year
Immunogen: The antiserum was produced against synthesized non-phosphopeptide derived from human ATF-2 around the phosphorylation site of Threonine 69 or 51.
Purification: The antibody was affinity-purified from rabbit antiserum by affinity-chromatography using epitope-specific immunogen.
Specificity/Sensitivity: ATF-2(Ab-69 or 51) Antibody detects endogenous levels of ATF-2 protein around Threonine 69 or 51.
Reactivity: Human, Mouse, Rat
Applications: WB: 1:500~1:1000 IHC: 1:50~1:100
ELISA: 1:20000 IP: Various Dilution
Swiss-Prot No. : P15336
References: Sevilla A, et al. (2004) J Biol Chem. 279(26):27458-27465.
Alsayed Y, et al. (2001) J Biol Chem. 276(6): 4012-4019.
Abdel-Hafiz H A, et al. (1992) Mol Endocrinol. 6: 2079-2089.
Gupta S, et al. (1995) Science. 267: 389-393.
Van Dam H, et al. (1995) EMBO J. 14(8): 1798-1811.



Immunohistochemical analysis of paraffin-embedded breast carcinoma. Left: Using ATF-2 (Ab-69 or 51) Antibody(#21030); Right: The same antibody preincubated with synthesized peptide.



Western blot analysis of extracts from LOVO cells. Line1: Using ATF-2(Ab-69 or 51) Antibody(#21030); Line2: Using the same antibody preincubated with synthesized peptide.