

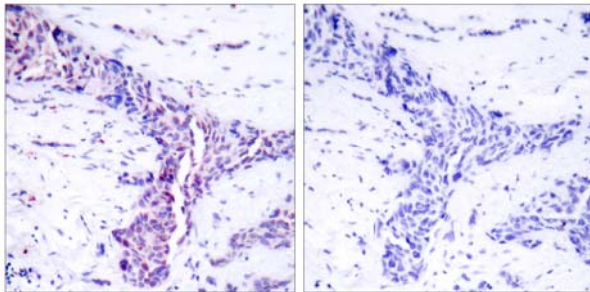


## ATF-2 (Ab-73 or 55) Antibody

Catalog Number 21032

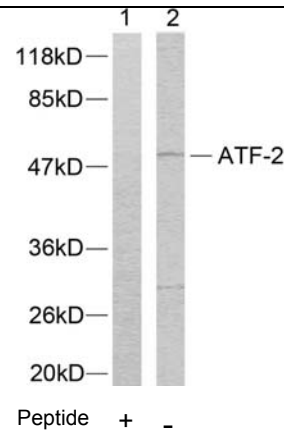
(For Research Use Only)

- Catalog Number:** 21032-1, 21032-2, 21032  
**Amount:** 50µg/50µl, 100µg/100µl, 200µg/200µl  
**Form of Antibody:** Rabbit IgG in phosphate buffered saline (without Mg<sup>2+</sup> and Ca<sup>2+</sup>), pH 7.4, 150mM NaCl, 0.02% sodium azide and 50% glycerol.  
**Storage/Stability:** Store at -20°C/1 year  
**Immunogen:** The antiserum was produced against synthesized non-phosphopeptide derived from human ATF-2 around the phosphorylation site of threonine 73 or 55.  
**Purification:** The antibody was affinity-purified from rabbit antiserum by affinity-chromatography using epitope-specific immunogen.  
**Specificity/Sensitivity:** ATF-2 (Ab-73 or 55) antibody detects endogenous levels of total ATF-2 protein.  
**Reactivity:** Human, Mouse, Rat  
**Applications:** WB: 1:500~1:1000 IHC: 1:50~1:100  
ELISA: 1:20000 IP: Various Dilution  
**Swiss-Prot No. :** P15336  
**References:** Beausoleil S A, et al. (2004) Proc Natl Acad Sci U S A. 101(33): 12130-12135.  
Abdel-Hafiz H A, et al. (1992) Mol Endocrinol. 6: 2079-2089.  
Gupta S, et al. (1995) Science. 267: 389-393.  
Van Dam H, et al. (1995) EMBO J. 14(8): 1798-1811.  
Livingstone C, et al. (1995) EMBO J. 14: 1785-1797.



Peptide - +

Immunohistochemical analysis of paraffin-embedded human breast carcinoma tissue using ATF-2 (Ab-73 or 55) antibody (#21032).



Western blot analysis of extracts from LOVO cells using ATF-2 (Ab-73 or 55) antibody (#21032).