

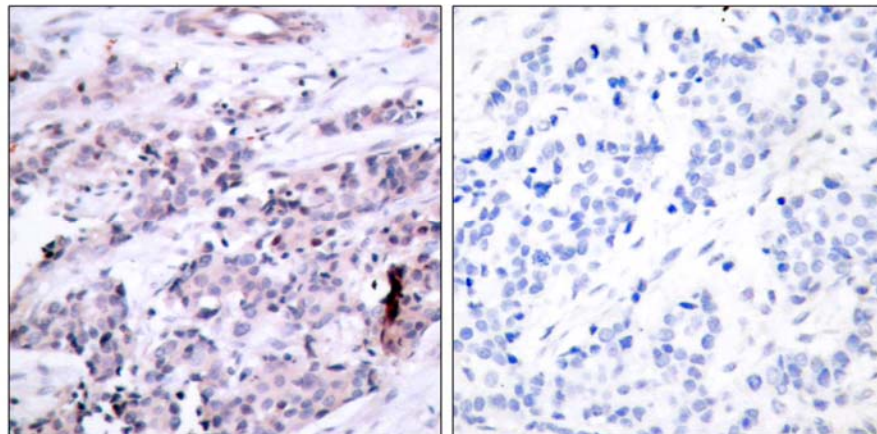


## BCL-2(Ab-56) Antibody

Catalog Number 21059

(For Research Use Only)

- Catalog Number:** 21059-1, 21059-2, 21059  
**Amount:** 50µg/50µl, 100µg/100µl, 200µg/200µl  
**Form of Antibody:** Rabbit IgG in phosphate buffered saline (without Mg<sup>2+</sup> and Ca<sup>2+</sup>), pH 7.4, 150mM NaCl, 0.02% sodium azide and 50% glycerol.  
**Storage/Stability:** Store at -20°C/1 year  
**Immunogen:** This antiserum was produced against synthesized non-phosphopeptide derived from human BCL-2 around the phosphorylation site of Threonine 56.  
**Purification:** The antibody was affinity-purified from rabbit antiserum by affinity-chromatography using epitope-specific immunogen.  
**Specificity/Sensitivity:** BCL-2(Ab-56) Antibody detects endogenous levels of BCL-2 protein around Threonine 56.  
**Reactivity:** Human  
**Applications:** IHC: 1:50~1:100 ELISA: 1:10000  
**Swiss-Prot No. :** P10415  
**References:** Ling, Y. H. et al. (1998) *J. Biol. Chem.* 273, 18984-18991.  
Huang, S.J. and Cidlowski, J.A. (2002) *FASEB* 16, 825-832.  
Deng, X. et al. (2001) *J. Biol. Chem.* 276, 23681-23688.  
Huang ST, et al. (2002) *FASEB J Jun*; 16(8): 825-32  
Yamamoto, K. et al. (1999) *Mol. Cell. Biol.* 19, 8469-8478.



Immunohistochemical analysis of paraffin-embedded breast carcinoma, using BCL-2(Ab-56) Antibody (#21059). Left: Untreated; Right: Treated with synthesized peptide.