

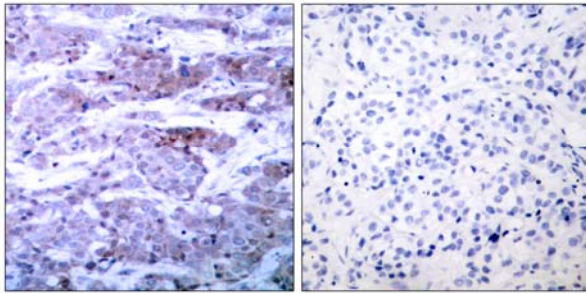


## BAD (Ab-112) Antibody

Catalog Number 21062

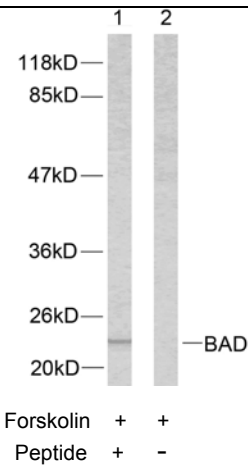
(For Research Use Only)

- Catalog Number:** 21062-1, 21062-2, 21062  
**Amount:** 50µg/50µl, 100µg/100µl, 200µg/200µl  
**Form of Antibody:** Rabbit IgG in phosphate buffered saline (without Mg<sup>2+</sup> and Ca<sup>2+</sup>), pH 7.4, 150mM NaCl, 0.02% sodium azide and 50% glycerol.  
**Storage/Stability:** Store at -20°C/1 year  
**Immunogen:** This antiserum was produced against synthesized non-phosphopeptide derived from human BAD around the phosphorylation site of serine 112.  
**Purification:** The antibody was affinity-purified from rabbit antiserum by affinity-chromatography using epitope-specific immunogen.  
**Specificity/Sensitivity:** BAD (Ab-112) antibody detects endogenous levels of total BAD protein.  
**Reactivity:** Human, Mouse, Rat  
**Applications:** WB: 1:500~1:1000 IHC: 1:50~1:100  
ELISA: 1:10000  
**Swiss-Prot No. :** Q92934  
**References:** Zhang B, et al. (2004). Mol Cell Biol.24 (14): 6205-6214.  
Rice PL, et al. (2003). Cancer Res.63 (3): 616-620.  
Wang XQ, et al. (2001). J Biol Chem.276 (48): 44504-44511.



Peptide - +

Immunohistochemical analysis of paraffin-embedded human breast carcinoma tissue using BAD (Ab-112) antibody (#21062).



Western blot analysis of extracts from 293 cells using BAD (Ab-112) antibody (#21062).