

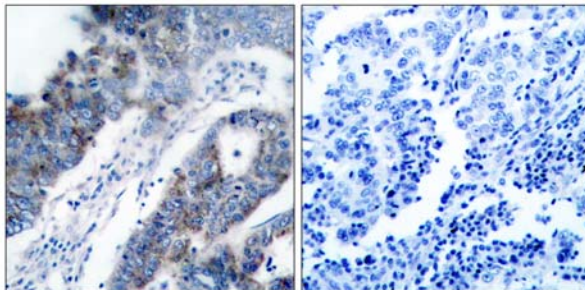


## ASK1(Ab-83) Antibody

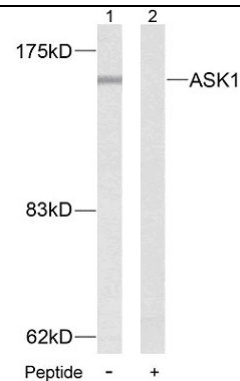
Catalog Number 21125

(For Research Use Only)

- Catalog Number:** 21125-1, 21125-2, 21125  
**Amount:** 50µg/50µl, 100µg/100µl, 200µg/200µl  
**Form of Antibody:** Rabbit IgG in phosphate buffered saline (without Mg<sup>2+</sup> and Ca<sup>2+</sup>), pH 7.4, 150mM NaCl, 0.02% sodium azide and 50% glycerol.  
**Storage/Stability:** Store at -20°C /1 year  
**Immunogen:** The antiserum was produced against synthesized non-phosphopeptide derived from human ASK1 around the phosphorylation site of Serine 83.  
**Purification:** The antibody was affinity-purified from rabbit antiserum by affinity-chromatography using epitope-specific immunogen.  
**Specificity/Sensitivity:** ASK1(Ab-83) Antibody detects endogenous levels of ASK1 protein around Serine 83.  
**Reactivity:** Human  
**Applications:** WB: 1:500~1:1000 IHC: 1:50~1:100  
ELISA: 1:20000  
**Swiss-Prot No. :** Q99683  
**References:** Mabuchi S, et al. (2004) Endocrinology. 145(1): 49-58.  
Yuan ZQ, et al. (2003) J Biol Chem. 278(26): 23432-23440.  
Kim AH, et al. (2001) Mol Cell Biol. 21(3): 893-901.



Immunohistochemical analysis of paraffin-embedded breast carcinoma, using ASK1(Ab-83) Antibody (#21125). Left: Untreated; Right: Treated with synthesized peptide



Western blot analysis of extracts from MDA-MB-435 cells. Line1: Using ASK1(Ab-83) Antibody (#21125); Line2: The same antibody preincubated with synthesized peptide.