

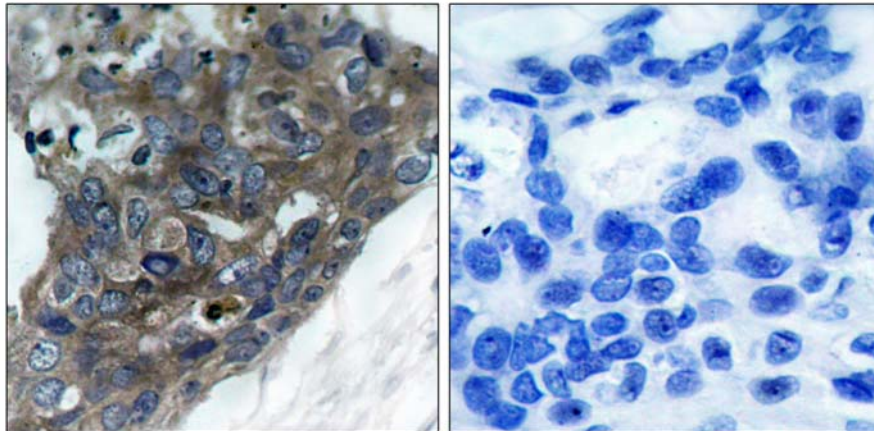


## ASK1(Ab-966) Antibody

Catalog Number 21134

(For Research Use Only)

- Catalog Number:** 21134-1, 21134-2, 21134  
**Amount:** 50µg/50µl, 100µg/100µl, 200µg/200µl  
**Form of Antibody:** Rabbit IgG in phosphate buffered saline (without Mg<sup>2+</sup> and Ca<sup>2+</sup>), pH 7.4, 150mM NaCl, 0.02% sodium azide and 50% glycerol.  
**Storage/Stability:** Store at -20°C /1 year  
**Immunogen:** The antiserum was produced against synthesized non-phosphopeptide derived from human ASK1 around the phosphorylation site of Serine 966.  
**Purification:** The antibody was affinity-purified from rabbit antiserum by affinity-chromatography using epitope-specific immunogen.  
**Specificity/Sensitivity:** ASK1(Ab-966) Antibody detects endogenous levels of total ASK1 protein.  
**Reactivity:** Human, Mouse  
**Applications:** IHC: 1:50~1:100 ELISA: 1:20000  
**Swiss-Prot No. :** Q99683  
**References:** Zhang W, et al. (2005) J Biol Chem. 280(19): 19036-19044.  
Fujii K, et al. (2004) Oncogene. 23(29):5099-5104.  
Goldman EH, et al. (2004) J Biol Chem 2004 Mar 12; 279(11): 10442-10449.  
Zhang L, et al. (1999) Proc Natl Acad Sci U S A. 96(15): 8511-8515.



Immunohistochemical analysis of paraffin-embedded breast carcinoma, using ASK1(Ab-966) Antibody (#21134). Left: Untreated; Right: Treated with synthesized peptide