

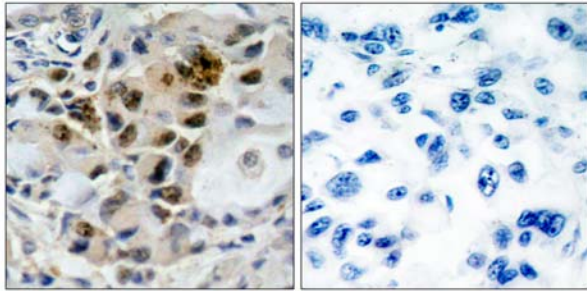


## AFX (Ab-197) Antibody

Catalog Number 21162

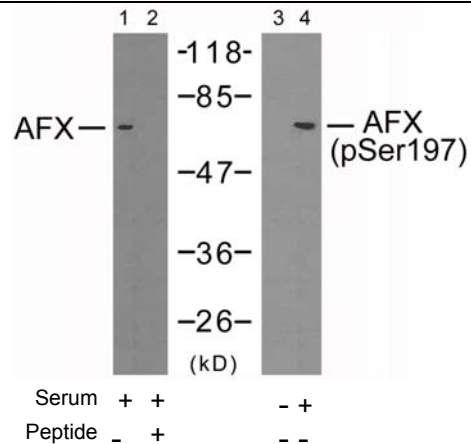
(For Research Use Only)

- Catalog Number:** 21162-1, 21162-2, 21162  
**Amount:** 50µg/50µl, 100µg/100µl, 200µg/200µl  
**Form of Antibody:** Rabbit IgG in phosphate buffered saline (without Mg<sup>2+</sup> and Ca<sup>2+</sup>), pH 7.4, 150mM NaCl, 0.02% sodium azide and 50% glycerol.  
**Storage/Stability:** Store at -20 °C /1 year  
**Immunogen:** The antiserum was produced against synthesized non-phosphopeptide derived from human AFX around the phosphorylation site of serine 197.  
**Purification:** The antibody was affinity-purified from rabbit antiserum by affinity-chromatography using epitope-specific immunogen.  
**Specificity/Sensitivity:** AFX (Ab-197) antibody detects endogenous levels of total AFX protein.  
**Reactivity:** Human, Mouse, Rat  
**Applications:** WB: 1:500~1:1000 IHC: 1:50~1:100  
ELISA: 1:20000  
**Swiss-Prot No. :** P98177  
**References:** Di Maira G, et al. (2005)Cell Death Differ; 12(6): 668-77.  
Essers MA, et al. EMBO J 2004 Nov. 11.  
Brownawell AM, (2001) Mol Cell Biol; 21(10): 3534-46.  
Kops GJ, et al. (1999) Nature; 398(6728): 630-4.



Peptide - +

Immunohistochemical analysis of paraffin-embedded human lung carcinoma tissue using AFX (Ab-197) antibody (#21162).



Western blot analysis of extracts from 293 cells using AFX (Ab-197) antibody (#21162, Line 1 and 2) and AFX (phospho-Ser197) antibody (#11137, Line 3 and 4).