

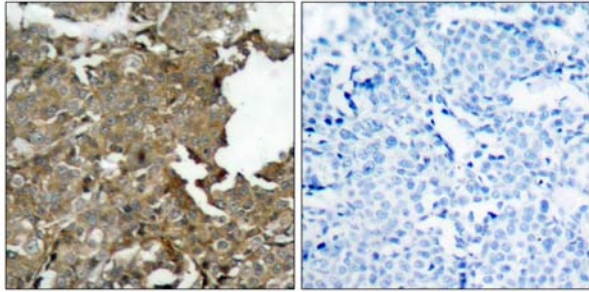


cofilin (Ab-3) Antibody

Catalog Number 21164

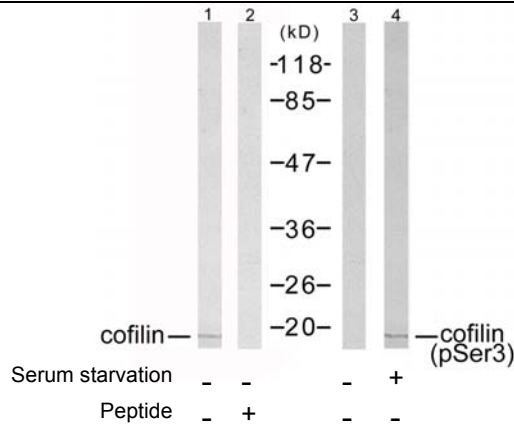
(For Research Use Only)

- Catalog Number:** 21164-1, 21164, 21164
Amount: 50µg/50µl, 100µg/100µl, 200µg/200µl
Form of Antibody: Rabbit IgG in phosphate buffered saline (without Mg²⁺ and Ca²⁺), pH 7.4, 150mM NaCl, 0.02% sodium azide and 50% glycerol.
- Storage/Stability:** Store at -20 °C /1 year
Immunogen: The antiserum was produced against synthesized non-phosphopeptide derived from human cofilin around the phosphorylation site of serine 3.
Purification: The antibody was affinity-purified from rabbit antiserum by affinity-chromatography using epitope-specific immunogen.
- Specificity/Sensitivity:** cofilin (Ab-1022) antibody detects endogenous levels of total cofilin protein.
Reactivity: Human, Mouse, Rat
Applications: WB: 1:500~1:1000 IHC: 1:50~1:100
 ELISA: 1:10000
Swiss-Prot No. : P23528
References: Kobayashi M, et al. (2006) EMBO J 25(4): 713-26.
 Wang Y, et al. (2005) Biol Chem 280(13): 12683-9.
 Smith-Beckerman DM, et al. (2005) Mol Cell Proteomics: 156-68.



P-Peptide - +

Immunohistochemical analysis of paraffin-embedded human breast carcinoma tissue using cofilin (Ab-1022) antibody (#21164).



Western blot analysis of extracts from COLO 205 cells using cofilin (Ab-1022) antibody (#21164, Line 1 and 2) and cofilin (phospho-Ser3) antibody (#11139, Line 3 and 4).