

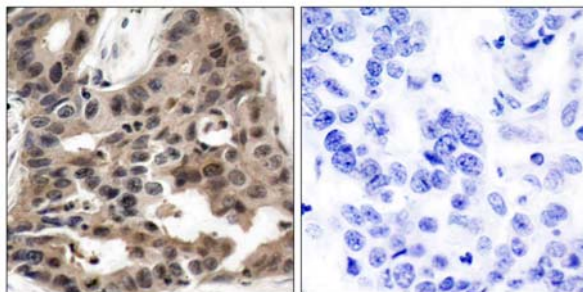


4E-BP1 (Ab-36) Antibody

Catalog Number 21215

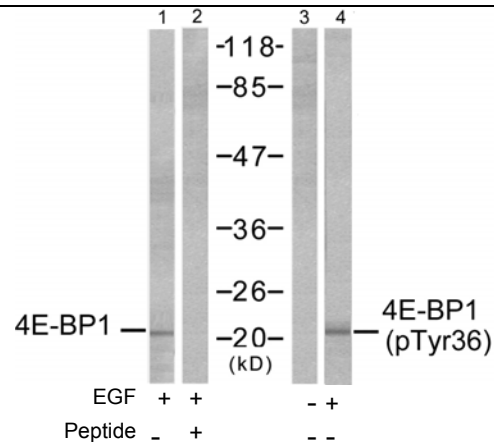
(For Research Use Only)

- Catalog Number:** 21215-1, 21215-2, 21215
Amount: 50µg/50µl, 100µg/100µl, 200µg/200µl
Swiss-Prot No. : Q13541
All Names: 4E-BP1, eIF4E-binding protein 1, Phosphorylated heat- and acid-stable protein regulated by insulin 1, PHAS-I
Form of Antibody: Rabbit IgG in phosphate buffered saline (without Mg²⁺ and Ca²⁺), pH 7.4, 150mM NaCl, 0.02% sodium azide and 50% glycerol.
Storage/Stability: Store at -20 °C /1 year
Immunogen: The antiserum was produced against synthesized non-phosphopeptide derived from human 4E-BP1 around the phosphorylation site of threonine 36 (S-T-T^P-P-G).
Purification: The antibody was affinity-purified from rabbit antiserum by affinity-chromatography using epitope-specific immunogen.
Specificity/Sensitivity: 4E-BP1 (Ab-36) antibody detects endogenous levels of total 4E-BP1 protein. This antibody may cross-react with 4E-BP2 and 4E-BP3.
Reactivity: Human, Mouse, Rat
Applications: WB: 1:500~1:1000 IHC: 1:50~1:100
ELISA: 1:10000
References: Gingras AC, et al. Genes Dev Nov. 2005 Feb 15.
Mothe-Satney I, et al.(2000) J Biol Chem:15(21): 2852-64.
Gingras AC, et al. (1999) Genes Dev:13(11): 1422-37.
Lal L, et al.(2005) Blood;105(4): 1669-7.



Peptide - +

Immunohistochemical analysis of paraffin-embedded human breast carcinoma tissue using 4E-BP1 (Ab-36) antibody (#21215).



Western blot analysis of extracts from MDA-MB-435 cells, untreated or EGF-treated (200ng/ml, 30min), using 4E-BP1 (Ab-36) antibody (#21215, Line 1 and 2) and 4E-BP1 (phospho-Thr36) antibody (#11222, Line 3 and 4).