

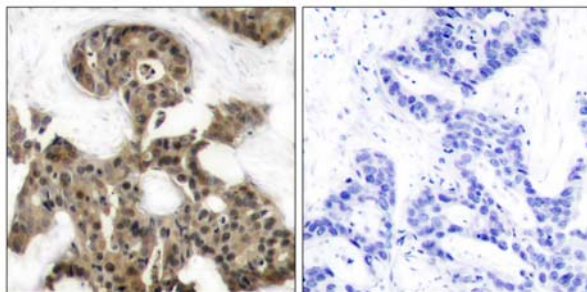


## 4E-BP1 (Ab-45) Antibody

Catalog Number 21216

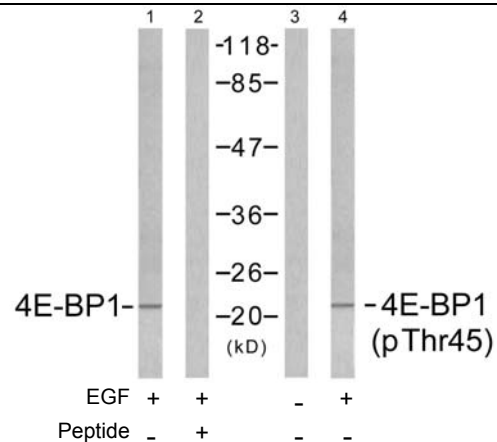
(For Research Use Only)

- Catalog Number:** 21216-1, 21216-2, 21216  
**Amount:** 50µg/50µl, 100µg/100µl, 200µg/200µl  
**Swiss-Prot No. :** Q13541  
**All Names:** 4EBP1, EIF4EBP1, Eukaryotic translation initiation factor 4E binding protein 1, Insulin-stimulated EIF-4E binding protein PHAS-I, P/OKCL.6, PHAS-1, PHAS-I  
**Form of Antibody:** Rabbit IgG in phosphate buffered saline (without Mg<sup>2+</sup> and Ca<sup>2+</sup>), pH 7.4, 150mM NaCl, 0.02% sodium azide and 50% glycerol.  
**Storage/Stability:** Store at -20 °C /1 year  
**Immunogen:** The antiserum was produced against synthesized non-phosphopeptide derived from human 4E-BP1 around the phosphorylation site of threonine 45 (S-T-T<sup>P</sup>-P-G).  
**Purification:** The antibody was affinity-purified from rabbit antiserum by affinity-chromatography using epitope-specific immunogen.  
**Specificity/Sensitivity:** 4E-BP1 (Ab-45) antibody detects endogenous levels of total 4E-BP1 protein. This antibody may cross-react with 4E-BP2 and 4E-BP3.  
**Reactivity:** Human, Mouse, Rat  
**Applications:** WB: 1:500~1:1000 IHC: 1:50~1:100  
 ELISA: 1:20000  
**References:** Gingras AC, et al. (1998) Genes Dev 12(4): 502-513.  
 Brugarolas J, et al. (2004) Genes Dev 18(23): 2893-2904.  
 Kumar V, et al. (2000) EMBO J 19(5): 1087-1097.  
 Moody CA, et al. (2005) J Virol 79(9): 5499-5506.  
 Burnett PE, et al. (1998) Proc Natl Acad Sci U S A 95(4): 1432-1437.



Peptide - +

Immunohistochemical analysis of paraffin-embedded human breast carcinoma tissue using 4E-BP1 (Ab-45) antibody (#21216).



Western blot analysis of extracts from MDA-MB-435 cells untreated or treated with EGF (200ng/ml, 5min), using 4E-BP1 (Ab-45) antibody (#21216, Line1 and 2) and 4E-BP1 (phospho-Thr45) antibody (#11223, Line 3 and 4).