



Cortactin (Ab-466) Antibody

Catalog Number 21264

(For Research Use Only)

Catalog Number: 21264-1, 21264-2, 21264

Amount: 50µg/50µl, 100µg/100µl, 200µg/200µl

Swiss-Prot No. : Q14247

All Names: Amplexin, CTTN, EMS1, Oncogene EMS1, SRC9, Src substrate cortactin

Form of Antibody: Rabbit IgG in phosphate buffered saline (without Mg²⁺ and Ca²⁺), pH 7.4, 150mM NaCl, 0.02% sodium azide and 50% glycerol.

Storage/Stability: Store at -20 °C /1 year

Immunogen: The antiserum was produced against synthesized non-phosphopeptide derived from human Cortactin around the phosphorylation site of tyrosine 466 (P-V-Y-E-T).

Purification: The antibody was affinity-purified from rabbit antiserum by affinity-chromatography using epitope-specific immunogen.

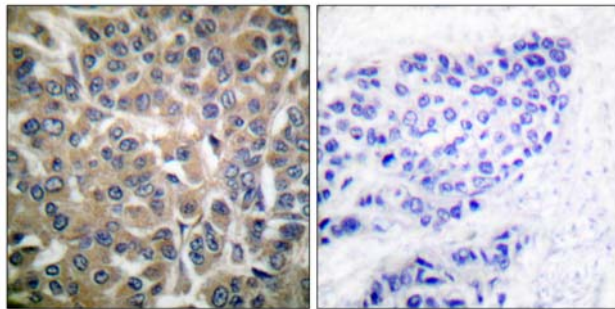
Specificity/Sensitivity: Cortactin (Ab-466) antibody detects endogenous levels of total Cortactin protein.

Reactivity: Human; Mouse; Rat

Applications: WB: 1:500~1:1000 IHC: 1:50~1:100

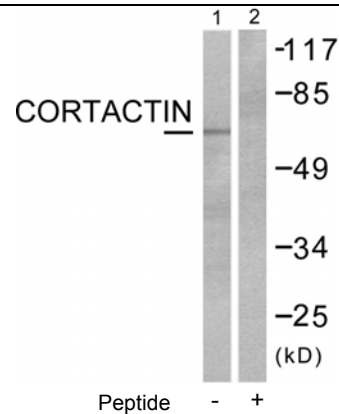
ELISA: 1:20000

References: Julie A. Head, Mol. Biol. Cell, Aug 2003; 14: 3216.
Cherry Luo, J. Biol. Chem., Oct 2006; 281: 30081 - 30093.
Jianwei Zhu, J. Biol. Chem., Apr 2007; 10.1074.
David Hattan, J. Biol. Chem., Oct 2002; 277: 38596 - 38606.



P-peptide - +

Immunohistochemical analysis of paraffin-embedded human breast carcinoma tissue using Cortactin (Ab-466) antibody (#21264).



Western blot analysis of extracts from cos-7 cells, using Cortactin (Ab-466) antibody (#21264, Line 1 and 2).