



CREB (Ab-129) Antibody

Catalog Number 21265

(For Research Use Only)

Catalog Number: 21265-1, 21265-2, 21265

Amount: 50µg/50µl, 100µg/100µl, 200µg/200µl

Swiss-Prot No. : P16220

All Names: CREB1, cAMP response element-binding protein

Form of Antibody: Rabbit IgG in phosphate buffered saline (without Mg²⁺ and Ca²⁺), pH 7.4, 150mM NaCl, 0.02% sodium azide and 50% glycerol.

Storage/Stability: Store at -20°C/1 year

Immunogen: The antiserum was produced against synthesized non-phosphopeptide derived from human CREB around the phosphorylation site of serine 129 (I-L-S^P-R-R).

Purification: The antibody was affinity-purified from rabbit antiserum by affinity-chromatography using epitope-specific immunogen.

Specificity/Sensitivity: CREB (Ab-129) antibody detects endogenous levels of total CREB protein.

Reactivity: Human, Mouse, Rat

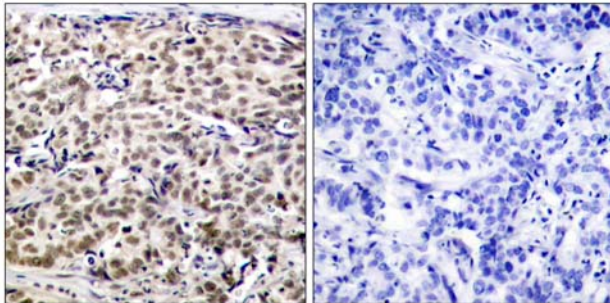
Applications: WB: 1:500~1:1000 IHC: 1:50~1:100
ELISA: 1:10000

References: Chrystelle V. Garat, et al. (2006) Mol. Cell. Biol; 26: 4934-4948.

Lilah Rothem, et al. (2004) Mol. Pharmacol; 66: 1536-1543.

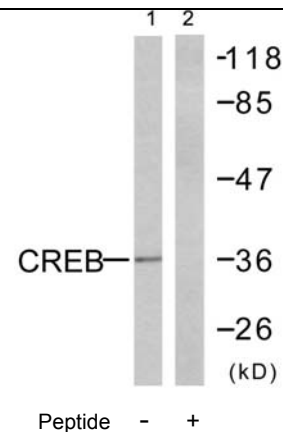
Darren R. Tyson, et,al. (2002) Endocrinology; 143:674.

Kyung-Woo Park, et al. (2003) Arterioscler. Thromb. Vasc. Biol; 23: 1364.



Peptide - +

Immunohistochemical analysis of paraffin-embedded human breast carcinoma tissue using CREB (Ab-129) antibody (#21265).



Western blot analysis of extracts from NIH/3T3 cells, using CREB (Ab-129) antibody (#21265, Line 1 and 2).